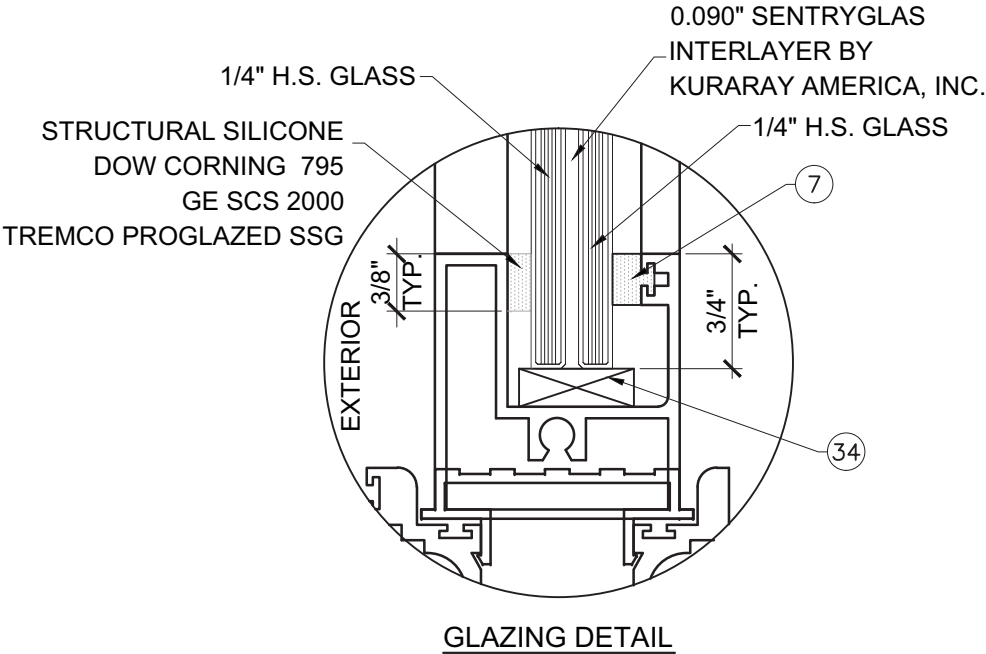


CONTINENTAL GLASS SYSTEMS, INC.

SERIES 2000 ALUMINUM SLIDING GLASS DOOR

LARGE AND SMALL MISSILE IMPACT (LMI & SMI)



GENERAL NOTES:

- THIS PRODUCT HAS BEEN DESIGNED AND TESTED TO COMPLY WITH THE REQUIREMENTS OF THE FLORIDA BUILDING CODE 5TH EDITION (2014) INCLUDING HIGH VELOCITY HURRICANE ZONE (HVHZ).
- WINDOWS RATED FOR LARGE MISSILE IMPACT. IMPACT SHUTTERS ARE NOT REQUIRED.
- THESE WINDOWS ARE APPROVED FOR AIR AND WATER INFILTRATION.
- ANCHORS SHALL BE AS LISTED, SPACED AS SHOWN ON DETAILS. ANCHORS EMBEDMENT TO BASE MATERIAL SHALL BE BEYOND WALL DRESSING OR STUCCO.
- ANCHORING OR LOADING CONDITIONS NOT SHOWN IN THESE DETAILS ARE NOT PART OF THIS APPROVAL.
- MATERIALS INCLUDING BUT NOT LIMITED TO STEEL/METAL SCREWS THAT COME INTO CONTACT WITH OTHER DISSIMILAR MATERIALS SHALL MEET THE REQUIREMENTS OF THE 5TH EDITION FLORIDA BUILDING CODE (2014) SECTION AS APPLICABLE.
- METAL STRUCTURES NOT BY CONTINENTAL GLASS SYSTEMS, INC. DESIGNED TO SUPPORT THE LOADS IMPOSED BY THIS GLAZING SYSTEM AND TO TRANSFER SUCH LOADS TO THE BUILDING MAIN STRUCTURE.
- ULTIMATE LOAD OBTAINED FROM ASCE 7-10, MULTIPLY BY 0.6 SHALL BE LESS THAN OR EQUAL TO MAX. DESIGN LOAD IN THIS DOCUMENT. THE DESIGN LOADS SHOWN IN THIS DOCUMENT ARE ALLOWABLE DESIGN LOADS.

NOTE:
GLASS COMPLIES WITH ASTM E1300-09 (3 SEC. GUSTS).

- TYPICAL ANCHORS: (SEE ELEVATIONS FOR SPACING)
- TYPE 'A' -- 5/16" DIA. ULTRACON BY 'ELCO' (Fu=177 KSI, Fy=155 KSI) DIRECTLY INTO CONCRETE, fc'=3515 PSI MIN. 1-3/4" MIN. EMBED
- TYPE 'B' -- 5/16" DIA. TEKS- SELF DRILLING SCREWS (GRADE 5 CRS) INTO MIAMI-DADE COUNTY APPROVED MULLIONS (1/8" THK. MIN.) INTO METAL STRUCTURES
STEEL: 1/8" THK. MIN.
ALUMINUM: 1/8" THK. MIN. (6063-T5 MIN.)
(STEEL IN CONTACT WITH ALUMINUM TO BE PLATED OR PAINTED)

TYPICAL EDGE DISTANCE
 INTO CONCRETE = 3" MIN.
 INTO METAL STRUCTURE = 3/4" MIN.

- SEALANTS:
ALL FRAME CORNERS, JOINTS, MULLION SEAMS AND PERIMETER GLAZING BEAD TO FRAME INSTALLATION FASTENERS SEALED WITH SILICONE SEALANT.

LIMITATIONS OF USE

A- THIS PRODUCT EVALUATION DOCUMENT (P.E.D.) PREPARED BY THIS ENGINEER IS GENERIC AND DOES NOT PROVIDE INFORMATION FOR A SITE SPECIFIC PROJECT. I.E. WHERE THE SITE CONDITIONS DEVIATE FROM THE P.E.D.

B- CONTRACTOR TO BE RESPONSIBLE FOR THE SELECTION, PURCHASE AND INSTALLATION OF THIS PRODUCT BASED ON THIS PRODUCT EVALUATION PROVIDED HE/SHE DOES NOT DEVIATE FROM THE CONDITIONS DETAILED ON THIS DOCUMENT.

C- THIS PRODUCT EVALUATION DOCUMENT WILL BE CONSIDERED INVALID IF ALTERED BY ANY MEANS.

D- SITE SPECIFIC PROJECTS SHALL BE PREPARED BY A FLORIDA REGISTERED ENGINEER OR ARCHITECT WHICH WILL BECOME THE ENGINEER OF RECORD (E.O.R.) FOR THE PROJECT AND WHO WILL BE RESPONSIBLE FOR THE PROPER USE OF THE P.E.D.

E- THIS P.E.D. SHALL BEAR THE DATE AND ORIGINAL SEAL AND SIGNATURE OF THE PROFESSIONAL ENGINEER OF RECORD THAT PREPARED IT.

FL #18397

NO	DATE	REVISIONS DESCRIPTION

MCY ENGINEERING, INC.

GLAZING CONSULTANTS

8501 SW 124 Ave. Ste. 205A P: 305.271.0117
MIAMI, FL 33183 F: 305.279.6818

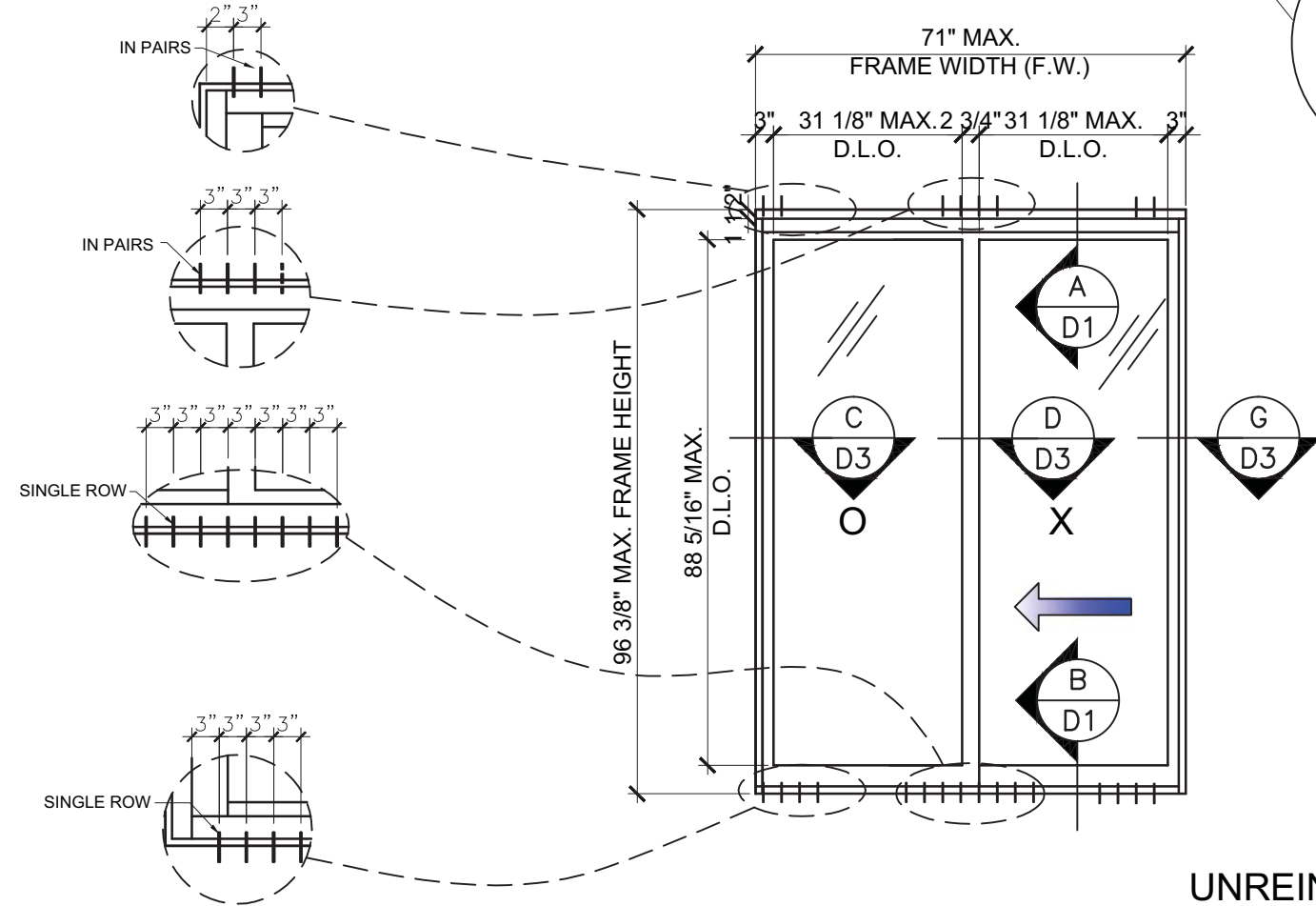
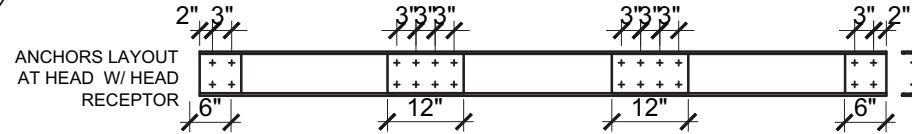
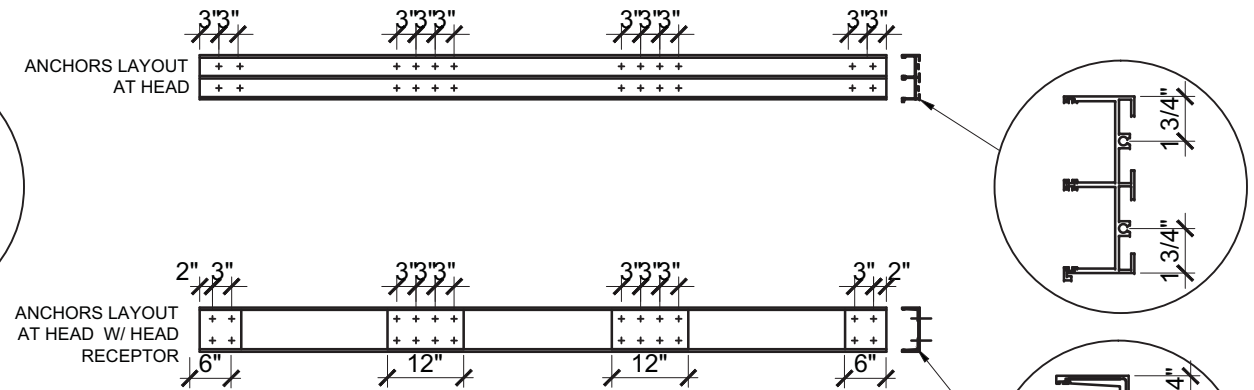
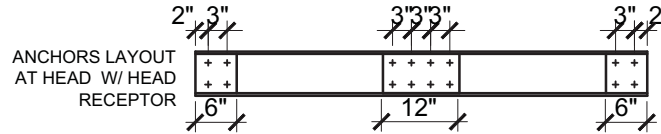
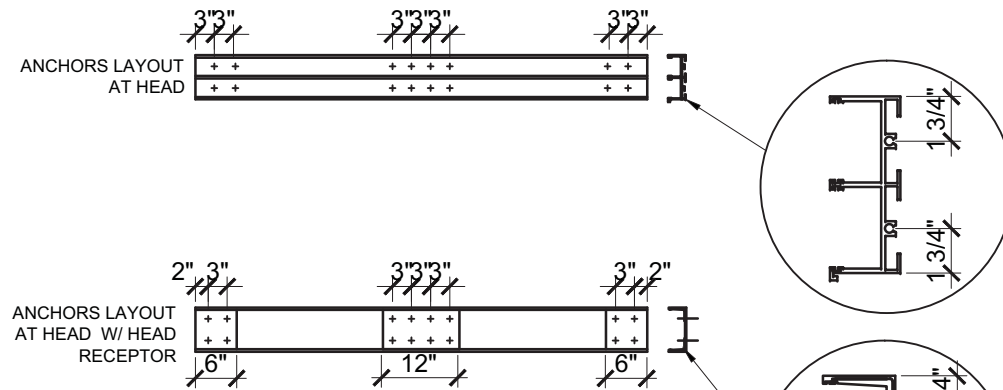
www.MCYEngineering.com MCY.Engineering@Att.net

SERIES 2000 SLIDING GLASS DOOR - LMI & SMI

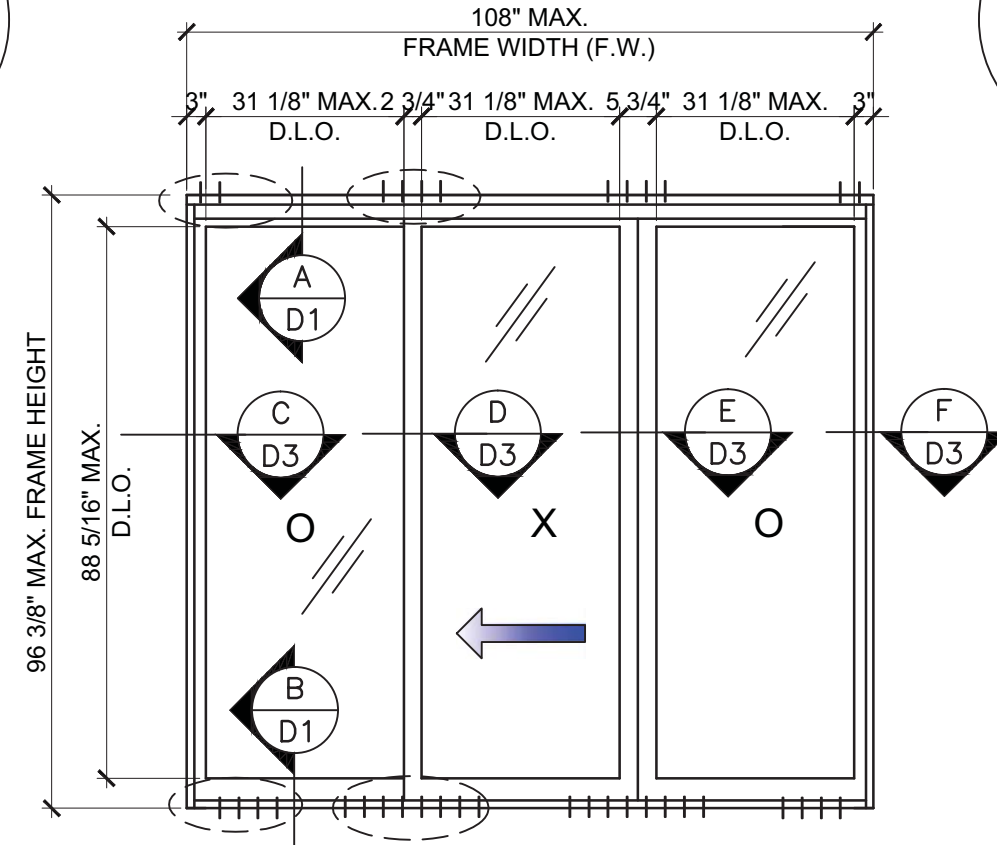
CONTINENTAL GLASS SYSTEMS, INC.

325 WEST 74 PLACE HIALEAH, FL 33014
TEL (305) 231-1101 FAX (305) 231-1103

COVER	
DATE	09/02/15
SCALE	AS SHOWN
DRAWN	T.G.
PROJECT	15-078
DRAWING NO.	AD15-68
1 OF 17	



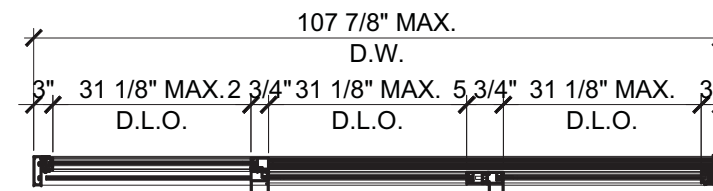
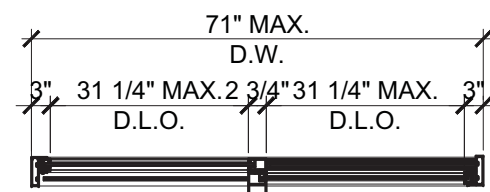
TYPICAL EXTERIOR ELEVATION (XO)



TYPICAL EXTERIOR ELEVATION (OXO)

UNREINFORCED HD SGD

UNREINFORCED SGD CAPACITY (PSF)			
MAX. PW(IN)	FH(IN)	EXT. (+)	INT. (-)
STANDARD/UNREINF. INTERLOCK			
41.3"	84"	140.0	140.0
38.5"	90"	140.0	140.0
36"	96.375"	140.0	140.0



*PANEL WIDTH (PW) = $\frac{\text{FRAME WIDTH (FH)}}{\text{\# OF PANELS}}$

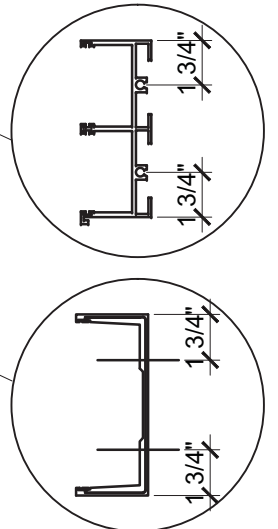
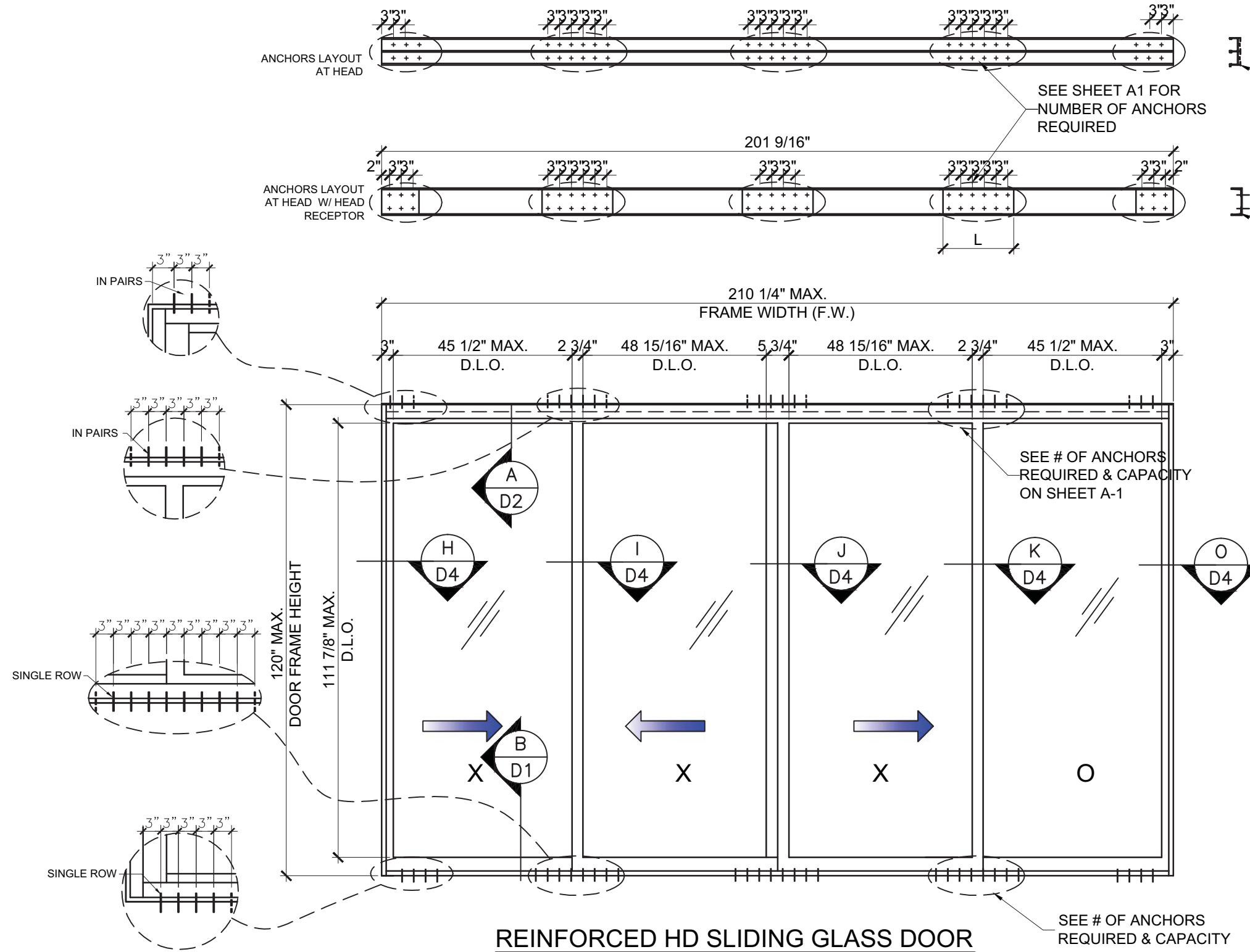
NO	DATE	DESCRIPTION

MCY ENGINEERING, INC.
 GLAZING CONSULTANTS
 8501 SW 124 Ave. Ste. 205A
 MIAMI, FL 33183
 P: 305.271.0117
 F: 305.279.6818
 www.MCYEngineering.com
 MCY.Engineering@Att.net

SERIES 2000 SLIDING GLASS DOOR - LMI & SMI
CONTINENTAL GLASS SYSTEMS, INC.
 325 WEST 74 PLACE HIALEAH, FL 33014
 TEL (305) 231-1101 FAX (305) 231-1103

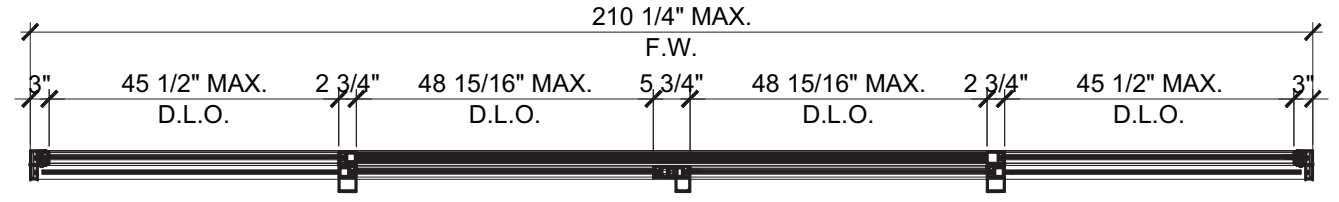
FL #18397
YIPING WANG P.E.
 LICENSE # 55983
 PE # 55983
 C. # 26677
 STATE OF FLORIDA
 PROFESSIONAL ENGINEER

E1	
DATE	09/02/15
SCALE	AS SHOWN
DRAWN	T.G.
PROJECT	15-078
DRAWING NO.	
AD15-68	
2 OF 17	



HEAD RECEPTOR REINF. LENGTH	
L	Pd
12" MIN.	≤ 110 PSF
18" MIN.	> 110 PSF

REINFORCED HD SLIDING GLASS DOOR
 TYPICAL EXTERIOR ELEVATION (OXXO)
 CAPACITIES SEE CHART ON SHEET E-3



REVISIONS	
NO.	DESCRIPTION

MCY ENGINEERING, INC.
 GLAZING CONSULTANTS
 8501 SW 124 Ave. Ste. 205A
 MIAMI, FL 33183
 P: 305.271.0117
 F: 305.279.6818
 www.MCYEngineering.com
 MCY.Engineering@Att.net

SERIES 2000 SLIDING GLASS DOOR - LMI & SMI
CONTINENTAL GLASS SYSTEMS, INC.
 325 WEST 74 PLACE HIALEAH, FL 33014
 TEL (305) 231-1101 FAX (305) 231-1103

FL #18397

YIPING WANG
 P.E.
 REGISTRATION
 PE #55983
 C. #26677

E2

DATE	09/02/15
SCALE	AS SHOWN
DRAWN	T.G.
PROJECT	15-078

DRAWING NO.	AD15-68
3 OF 17	

REINFORCED HD SLIDING GLASS DOOR

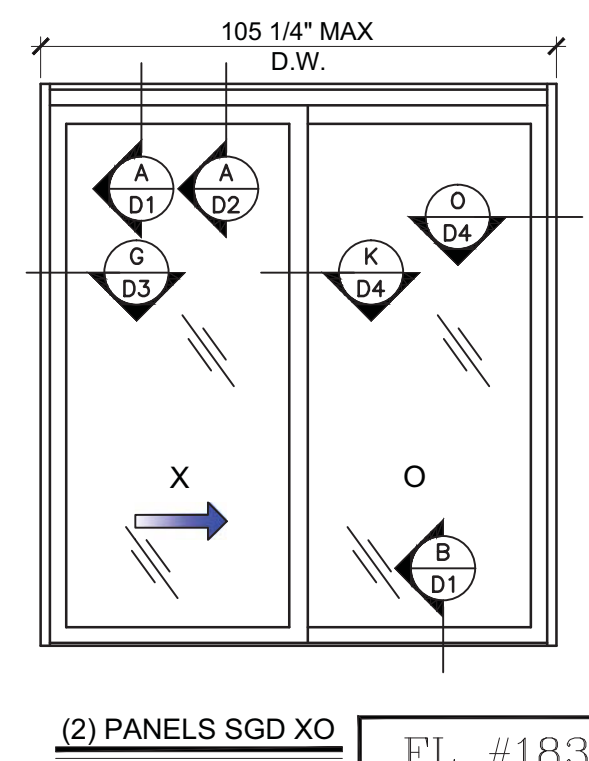
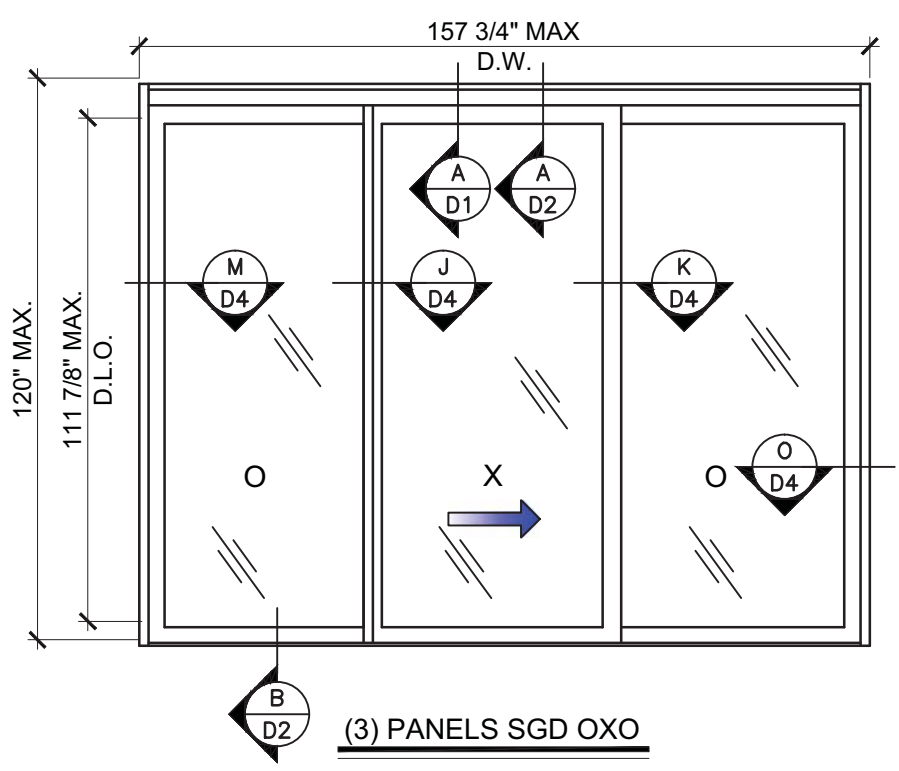
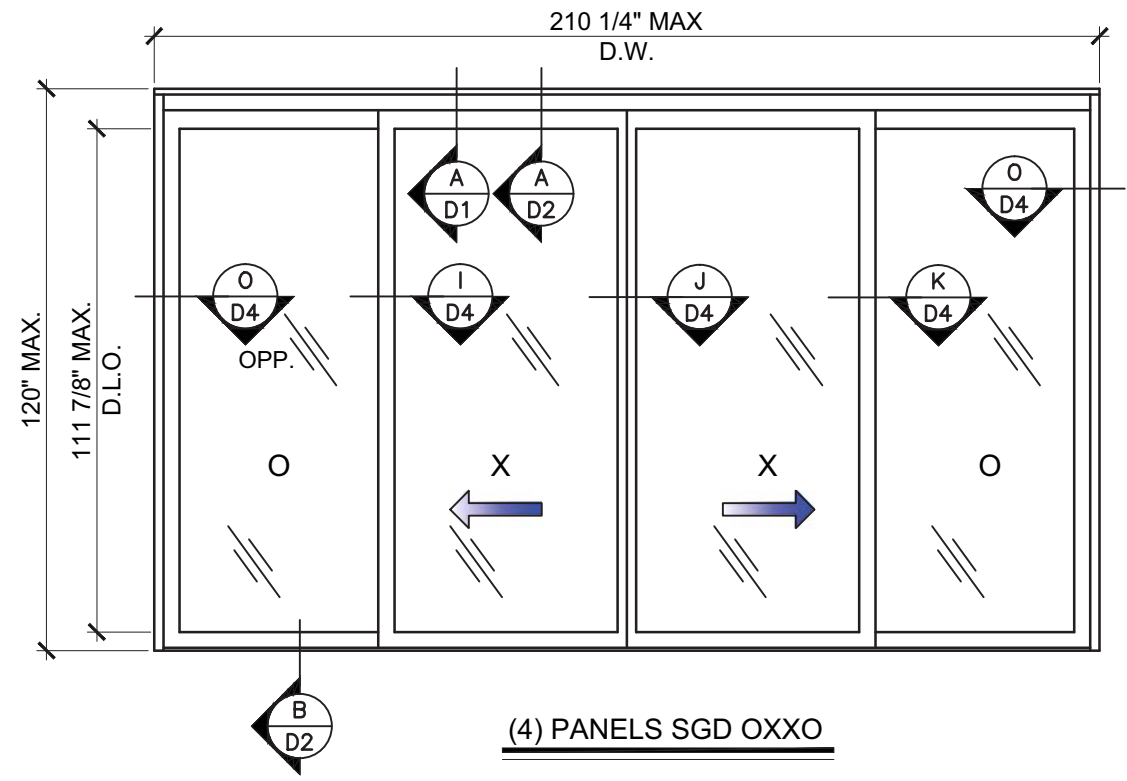
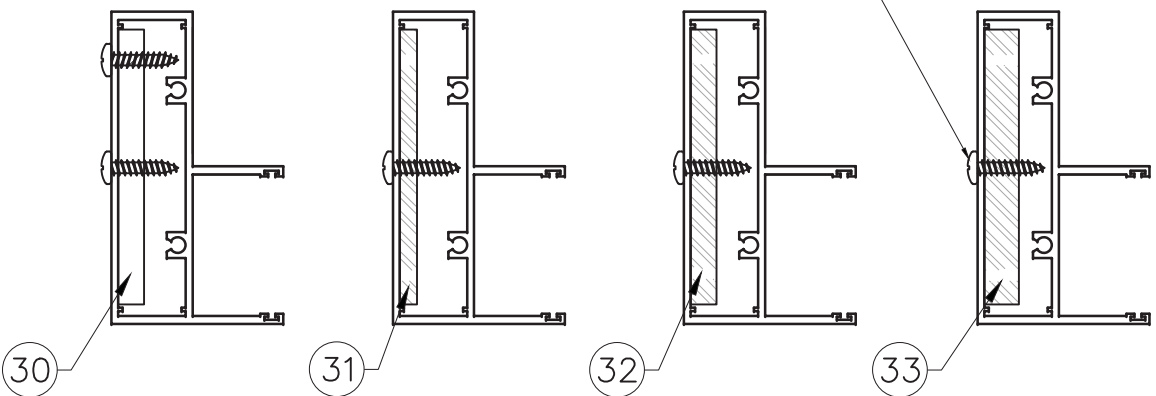
TYPICAL HD SGD OPTIONAL CONFIGURATIONS

DESIGN LOAD CAPACITY(+/- PSF)

PANEL WIDTH* (IN.)	FRAME HEIGHT (IN.)	W/JAMB REINFORCING OPTIONS			
		③① 3/8"X4 ALUM. BAR	③② 1/4"X4 STEEL BAR	③③ 3/8"X4 STEEL BAR	③④ 1/2"X4 STEEL BAR
42	90	140.0	140.0	140.0	140.0
48		140.0	140.0	140.0	140.0
54		140.0	140.0	140.0	140.0
60		140.0	140.0	140.0	140.0
42	96	140.0	140.0	140.0	140.0
48		140.0	140.0	140.0	140.0
54		140.0	140.0	140.0	140.0
60		140.0	132.5	140.0	140.0
42	102	140.0	140.0	140.0	140.0
48		140.0	137.8	140.0	140.0
54		133.8	125.1	140.0	140.0
60		123.9	115.4	140.0	140.0
42	108	137.3	137.0	140.0	140.0
48		122.5	121.9	140.0	140.0
54		111.3	110.4	139.1	140.0
56.5		106.7	105.7	133.2	140.0
42	114	116.0	122.3	140.0	140.0
48		103.3	108.6	136.8	140.0
53.5		93.6	98.2	123.7	140.0
42	119.875	98.9	110.0	138.5	140.0
48		87.9	97.4	122.8	140.0
52.5		81.4	90.0	113.5	136.9

*PANEL WIDTH = $\frac{\text{FRAME WIDTH}}{\text{\# OF PANELS}}$

(1) #14 SMS @ EACH END



CONFIGURATIONS FOR REINFORCED DOORS ONLY

FOR ANCHOR CAPACITIES, SEE CHARTS ON SHEET A1

FL #18397

YIPING WANG P.E.

PROFESSIONAL ENGINEER

NOVEMBER 2, 2015

NO.	DATE	DESCRIPTION

MCY ENGINEERING, INC.
GLAZING CONSULTANTS

8501 SW 124 Ave, Ste. 205A
MIAMI, FL 33183

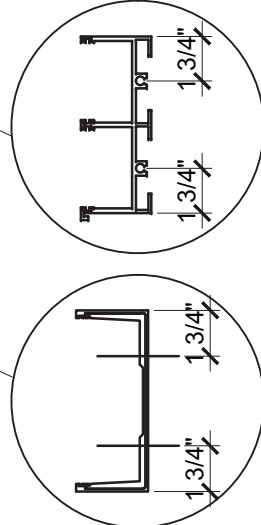
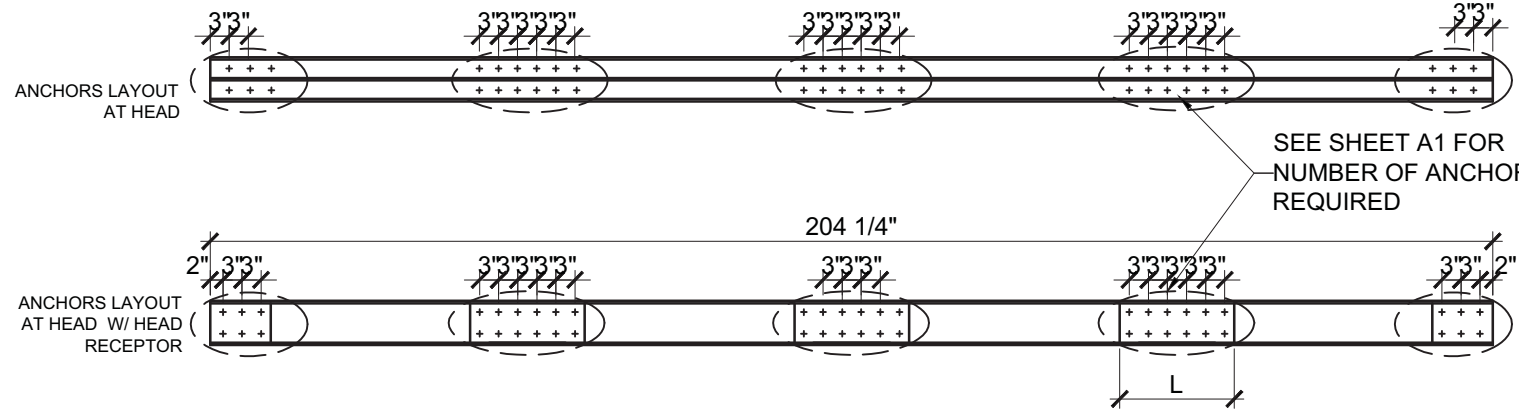
P: 305.271.0117
F: 305.279.6818

www.MCYEngineering.com

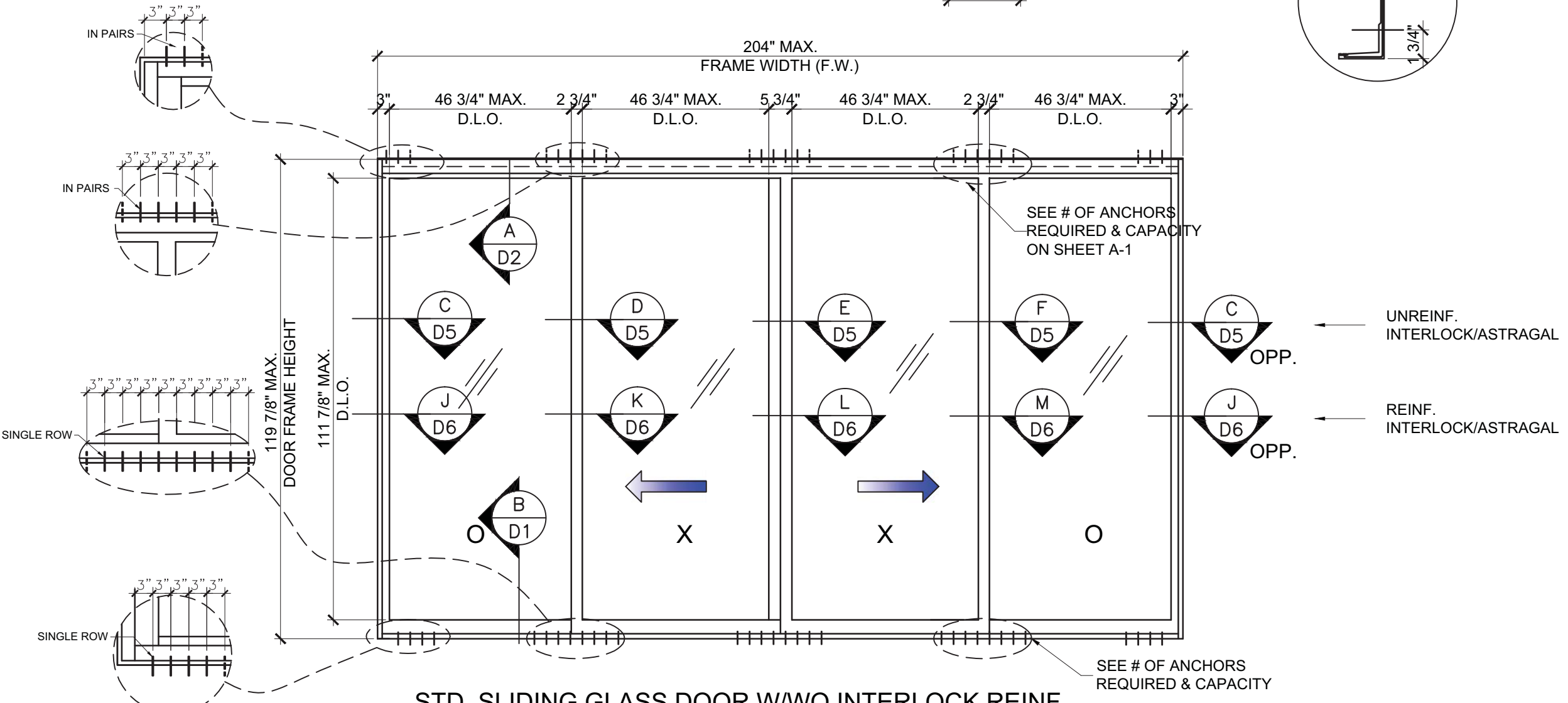
CONTINENTAL GLASS SYSTEMS, INC.

325 WEST 74 PLACE HIALEAH, FL 33014
TEL (305) 231-1101 FAX (305) 231-1103

E3	
DATE	09/02/15
SCALE	AS SHOWN
DRAWN	T.G.
PROJECT	15-078
DRAWING NO.	AD15-68
4 OF 17	



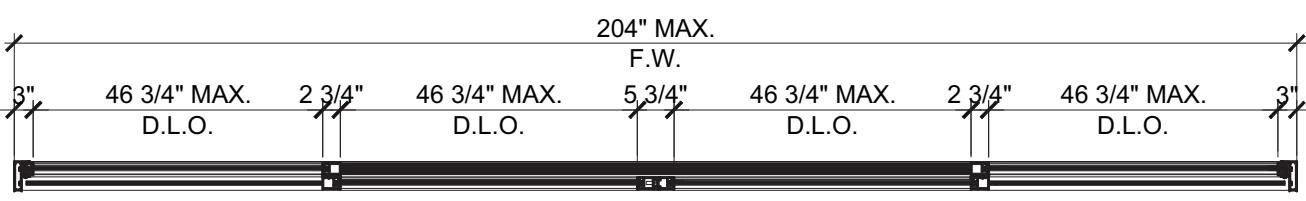
HEAD RECEPTOR REINF. LENGTH	
L	Pd
12" MIN.	≤ 110 PSF
18" MIN.	> 110 PSF



STD. SLIDING GLASS DOOR W/WO INTERLOCK REINF.

TYPICAL EXTERIOR ELEVATION (OXXO)

CAPACITIES SEE CHART ON SHEET E-5



FL #18397

YIPING WANG P.E.
FLORIDA REGISTRATION
PE #55983
C.# 55983

STATE OF FLORIDA
PROFESSIONAL ENGINEER

NO	DATE	REVISIONS DESCRIPTION

MCY ENGINEERING, INC.
GLAZING CONSULTANTS

MCY

8501 SW 124 Ave, Ste. 205A
MIAMI, FL 33183
P: 305.271.0117
F: 305.279.6818
www.MCYEngineering.com MCY.Engineering@Att.net

SERIES 2000 SLIDING GLASS DOOR - LMI & SMI

CONTINENTAL GLASS SYSTEMS, INC.
325 WEST 74 PLACE HIALEAH, FL 33014
TEL (305) 231-1101 FAX (305) 231-1103

E4

DATE	09/02/15
SCALE	AS SHOWN
DRAWN	T.G.
PROJECT	15-078

DRAWING NO.
AD15-68

5 OF 17

CHART 1

STD SGD DESIGN LOAD CAPACITY (UNREINF. INTERLOCKS) (+/- PSF)

PANEL WIDTH* (IN.)	FRAME HEIGHT (IN.)	JAMB W/WO REINFORCING OPTIONS	
		W/O REINF.	(30) 3/8"X4 ALUM. BAR
42	90	80.0	80.0
48	90	80.0	80.0
54	90	80.0	80.0
60	90	80.0	80.0
42	96	80.0	80.0
48	96	80.0	80.0
54	96	80.0	80.0
60	96	80.0	80.0
42	102	80.0	80.0
48	102	80.0	80.0
54	102	80.0	80.0
60	102	79.3	80.0
42	108	80.0	80.0
48	108	78.4	80.0
54	108	71.3	80.0
56.5	108	68.8	80.0
42	114	74.3	80.0
48	114	66.1	80.0
53.5	114	60.4	80.0
42	119.875	63.5	80.0
48	119.875	56.4	80.0
52.5	119.875	53.6	80.0

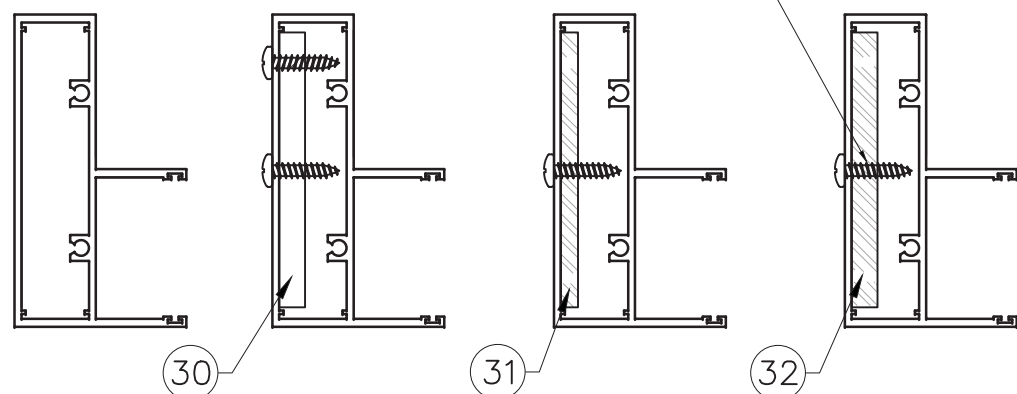
CHART 2

STD SGD DESIGN LOAD CAPACITIES (REINFORCED INTERLOCKS) (+/- PSF)

PANEL WIDTH* (IN.)	FRAME HEIGHT (IN.)	JAMB W/WO REINFORCING OPTIONS			
		W/O REINF.	(30) 3/8"X4 ALUM. BAR	(31) 1/4"X4 STEEL BAR	(32) 3/8"X4 STEEL BAR
42	90	110.0	110.0	110.0	110.0
48	90	110.0	110.0	110.0	110.0
54	90	110.0	110.0	110.0	110.0
60	90	110.0	110.0	110.0	110.0
42	96	110.0	110.0	110.0	110.0
48	96	110.0	110.0	110.0	110.0
54	96	104.4	110.0	110.0	110.0
60	96	97.0	110.0	110.0	110.0
42	102	105.2	110.0	110.0	110.0
48	102	94.0	110.0	110.0	110.0
54	102	85.7	110.0	110.0	110.0
60	102	79.3	110.0	110.0	110.0
42	108	87.9	110.0	110.0	110.0
48	108	78.4	110.0	110.0	110.0
54	108	71.3	110.0	110.0	110.0
56.5	108	68.8	107.4	106.4	110.0
42	114	74.3	110.0	110.0	110.0
48	114	66.1	103.3	108.6	110.0
53.5	114	60.4	94.3	98.9	110.0
42	119.875	63.5	99.2	110.0	110.0
48	119.875	56.4	88.2	97.6	110.0
52.5	119.875	53.6	83.5	92.5	110.0

*PANEL WIDTH = $\frac{\text{FRAME WIDTH}}{\text{\# OF PANELS}}$

(1) #14 SMS @ EACH END



FOR ANCHOR CAPACITIES, SEE CHARTS ON SHEET A1

NO	DATE	DESCRIPTION

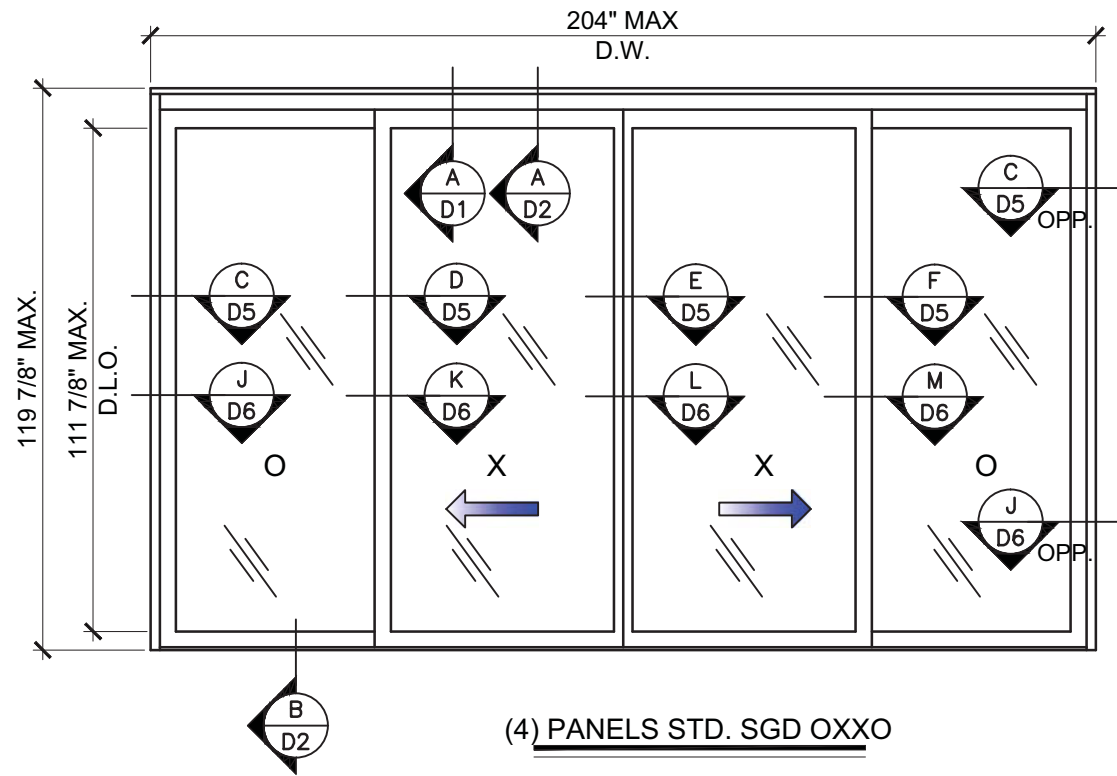
MCY ENGINEERING, INC.
GLAZING CONSULTANTS
8501 SW 124 Ave, Ste. 205A
MIAMI, FL 33183
P: 305.271.0117
F: 305.279.6818
www.MCYEngineering.com
MCY.Engineering@Att.net

SERIES 2000 SLIDING GLASS DOOR - LMI & SMI
CONTINENTAL GLASS SYSTEMS, INC.
325 WEST 74 PLACE HIALEAH, FL 33014
TEL (305) 231-1101 FAX (305) 231-1103

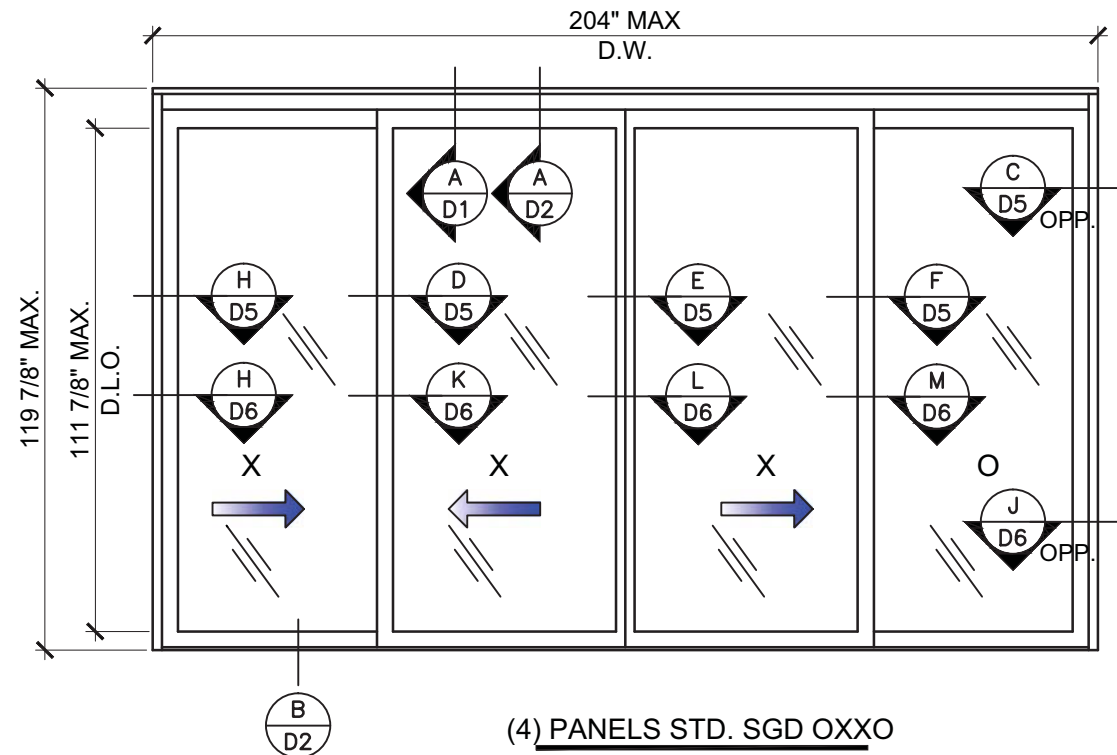
FL #18397
YIPING WANG P.E.
FLORIDA REGISTRATION
PE #55983
C.O. #26677
STATE OF FLORIDA
PROFESSIONAL ENGINEER

E5	
DATE	09/02/15
SCALE	AS SHOWN
DRAWN	T.G.
PROJECT	15-078
DRAWING NO.	
AD15-68	
6 OF 17	

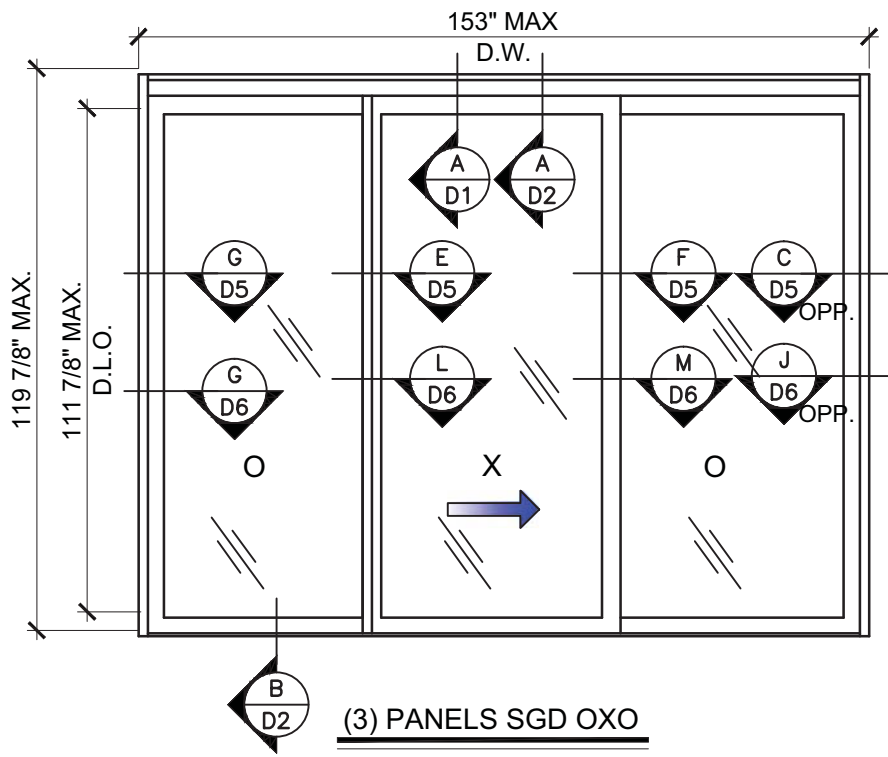
STD. SGD OPTIONAL CONFIGURATIONS



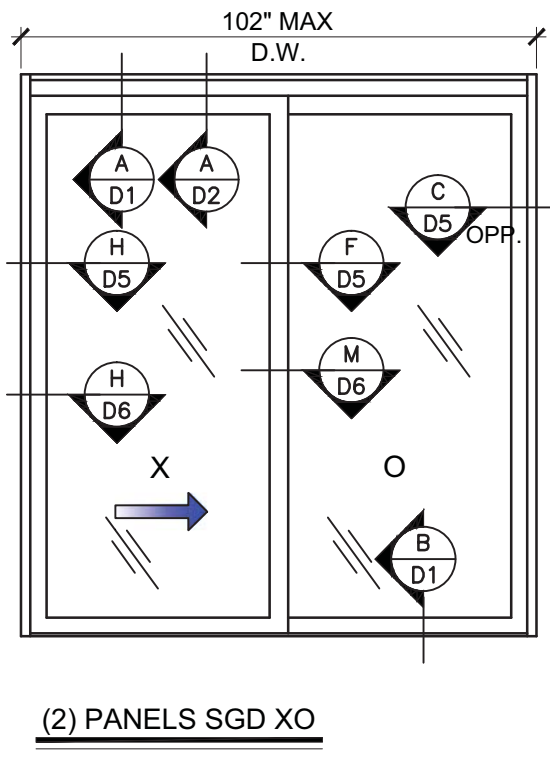
(4) PANELS STD. SGD OXXO



(4) PANELS STD. SGD OXXO



(3) PANELS SGD OXO



(2) PANELS SGD XO

NO	DATE	REVISIONS	DESCRIPTION

MCY ENGINEERING, INC.
 GLAZING CONSULTANTS
 8501 SW 124 Ave, Ste. 205A
 MIAMI, FL 33183
 P: 305.271.0117
 F: 305.279.6818
 www.MCYEngineering.com MCY.Engineering@Att.net

SERIES 2000 SLIDING GLASS DOOR - LMI & SMI
CONTINENTAL GLASS SYSTEMS, INC.
 325 WEST 74 PLACE HIALEAH, FL 33014
 TEL (305) 231-1101 FAX (305) 231-1103

E6
DATE 09/02/15
SCALE AS SHOWN
DRAWN T.G.
PROJECT 15-078
DRAWING NO. AD15-68
7 OF 17

ANCHOR LOAD CAPACITY (W/O HEAD RECEPTOR)					
PANEL WIDTH* (IN.)	FRAME HEIGHT (IN.)	HEAD ANCHOR (IN PAIRS)			
		A4	A5	A6	B4
42	90	140.0	140.0	140.0	140.0
48		139.7	140.0	140.0	140.0
54		124.2	140.0	140.0	140.0
60		111.8	139.7	140.0	140.0
42	96	140.0	140.0	140.0	140.0
48		131.0	140.0	140.0	140.0
54		116.4	140.0	140.0	140.0
60		104.8	131.0	140.0	140.0
42	102	140.0	140.0	140.0	140.0
48		123.3	140.0	140.0	140.0
54		109.6	137.0	140.0	140.0
60		98.6	123.3	140.0	140.0
42	108	133.1	140.0	140.0	140.0
48		116.4	140.0	140.0	140.0
54		103.5	129.4	140.0	140.0
57		98.1	122.6	140.0	140.0
42	114	128.1	140.0	140.0	140.0
48		110.3	137.9	140.0	140.0
54		98.1	122.6	140.0	140.0
42	120	119.8	140.0	140.0	140.0
48		104.8	131.0	140.0	140.0
52.5		95.8	119.8	140.0	140.0

ANCHOR LOAD CAPACITY (W/ HEAD RECEPTOR)						
PANEL WIDTH* (IN.)	FRAME HEIGHT (IN.)	HEAD ANCHOR (IN PAIRS)				
		A4	A5	A6	A7	B4
42	90	138.4	140.0	140.0	140.0	140.0
48		121.1	140.0	140.0	140.0	140.0
54		107.6	134.5	140.0	140.0	140.0
60		96.9	121.1	140.0	140.0	140.0
42	96	129.7	140.0	140.0	140.0	140.0
48		113.5	140.0	140.0	140.0	140.0
54		100.9	126.1	140.0	140.0	140.0
60		90.8	113.5	136.2	140.0	140.0
42	102	122.1	140.0	140.0	140.0	140.0
48		106.8	133.5	140.0	140.0	140.0
54		94.7	118.7	140.0	140.0	140.0
60		85.5	106.8	128.2	140.0	140.0
42	108	115.3	140.0	140.0	140.0	140.0
48		100.9	126.1	140.0	140.0	140.0
54		89.7	112.1	134.5	140.0	140.0
57		85.0	106.2	127.4	140.0	140.0
42	114	109.2	136.5	140.0	140.0	140.0
48		95.6	119.5	140.0	140.0	140.0
54		85.0	106.2	127.4	140.0	140.0
42	120	103.8	129.7	140.0	140.0	140.0
48		90.8	113.5	136.2	140.0	140.0
52.5		83.0	103.8	124.5	140.0	140.0

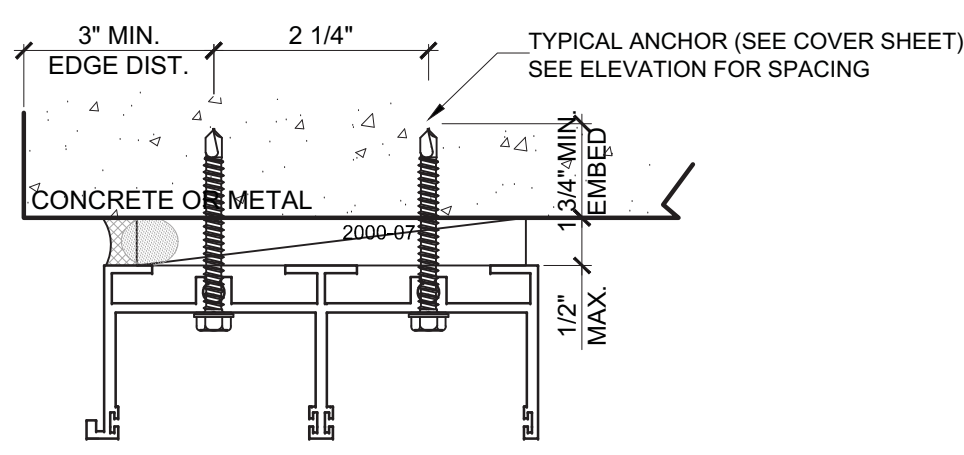
ANCHOR LOAD CAPACITY (AT SILL)			
PANEL WIDTH* (IN.)	FRAME HEIGHT (IN.)	SILL ANCHOR	
		A8	A10
42	90	140.0	140.0
48		140.0	140.0
54		140.0	140.0
60		132.3	140.0
42	96	140.0	140.0
48		140.0	140.0
54		137.8	140.0
60		124.0	140.0
42	102	140.0	140.0
48		140.0	140.0
54		129.7	140.0
60		116.7	140.0
42	108	140.0	140.0
48		137.8	140.0
54		122.5	140.0
57		116.0	140.0
42	114	140.0	140.0
48		130.5	140.0
54		116.0	140.0
42	120	140.0	140.0
48		124.0	140.0
52.5		113.4	140.0

A4 - 4 PAIRS OF ANCHOR TYPE "A" AT INTERLOCK
A5 - 5 PAIRS OF ANCHOR TYPE "A" AT INTERLOCK.
A6 - 6 PAIRS OF ANCHOR TYPE "A" AT INTERLOCK
B4 - 4 PAIRS OF ANCHOR TYPE "B" AT INTERLOCK

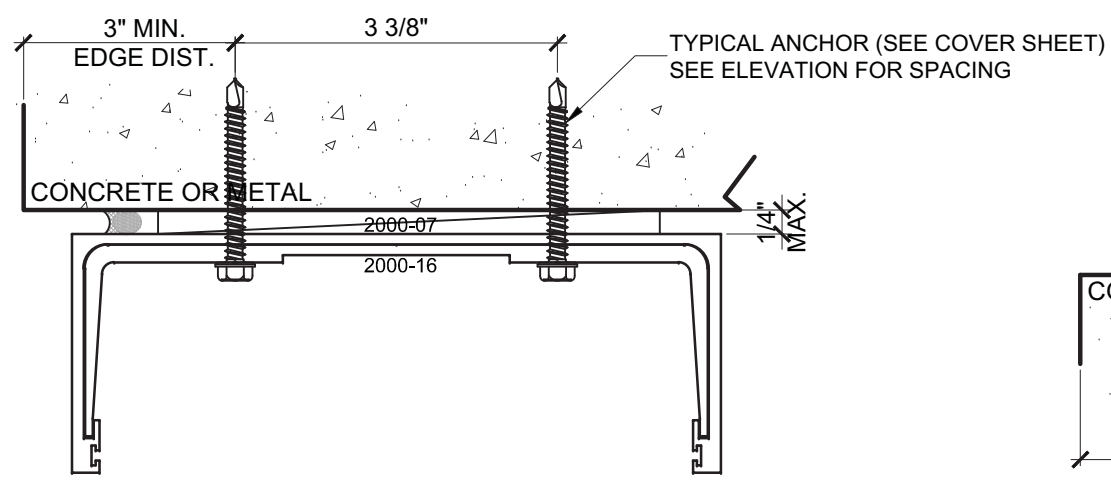
A4 - 4 PAIRS OF ANCHOR TYPE "A" AT INTERLOCK
A5 - 5 PAIRS OF ANCHOR TYPE "A" AT INTERLOCK.
A6 - 6 PAIRS OF ANCHOR TYPE "A" AT INTERLOCK
A7 - 7 PAIRS OF ANCHOR TYPE "A" AT INTERLOCK
B4 - 4 PAIRS OF ANCHOR TYPE "B" AT INTERLOCK
B5 - 5 PAIRS OF ANCHOR TYPE "B" AT INTERLOCK

*PANEL WIDTH = $\frac{\text{FRAME WIDTH}}{\text{\# OF PANELS}}$

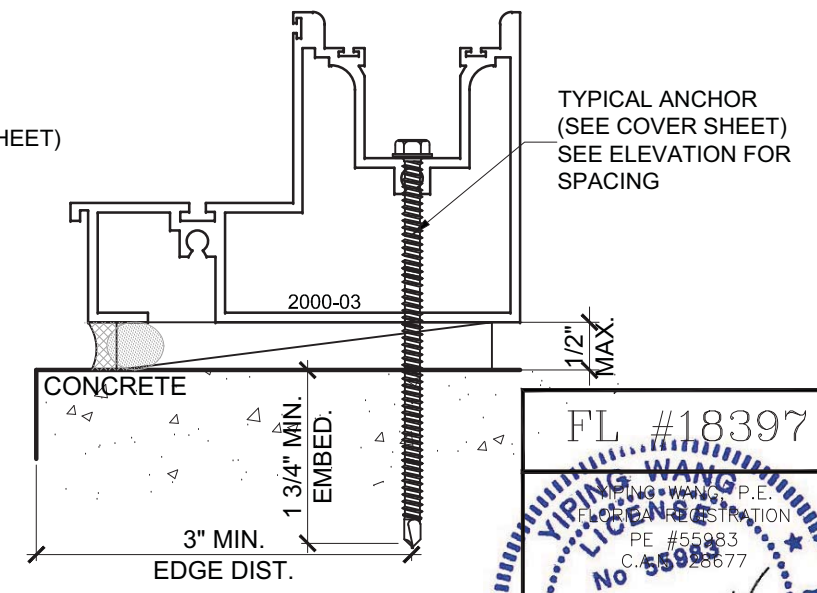
A8 - 8 ANCHOR TYPE "A" AT INTERLOCK
A10 - 10 ANCHOR TYPE "A" AT INTERLOCK.



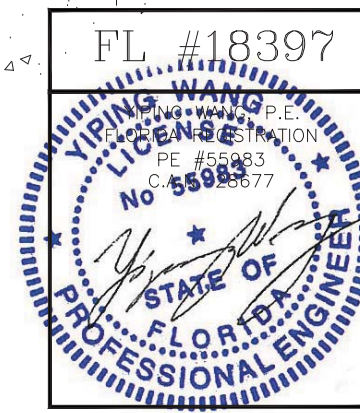
TYP. ANCHORS AT HEAD (W/O HEAD RECEPTOR)



TYP. ANCHORS AT HEAD (W/ HEAD RECEPTOR)



TYP. ANCHORS AT SILL

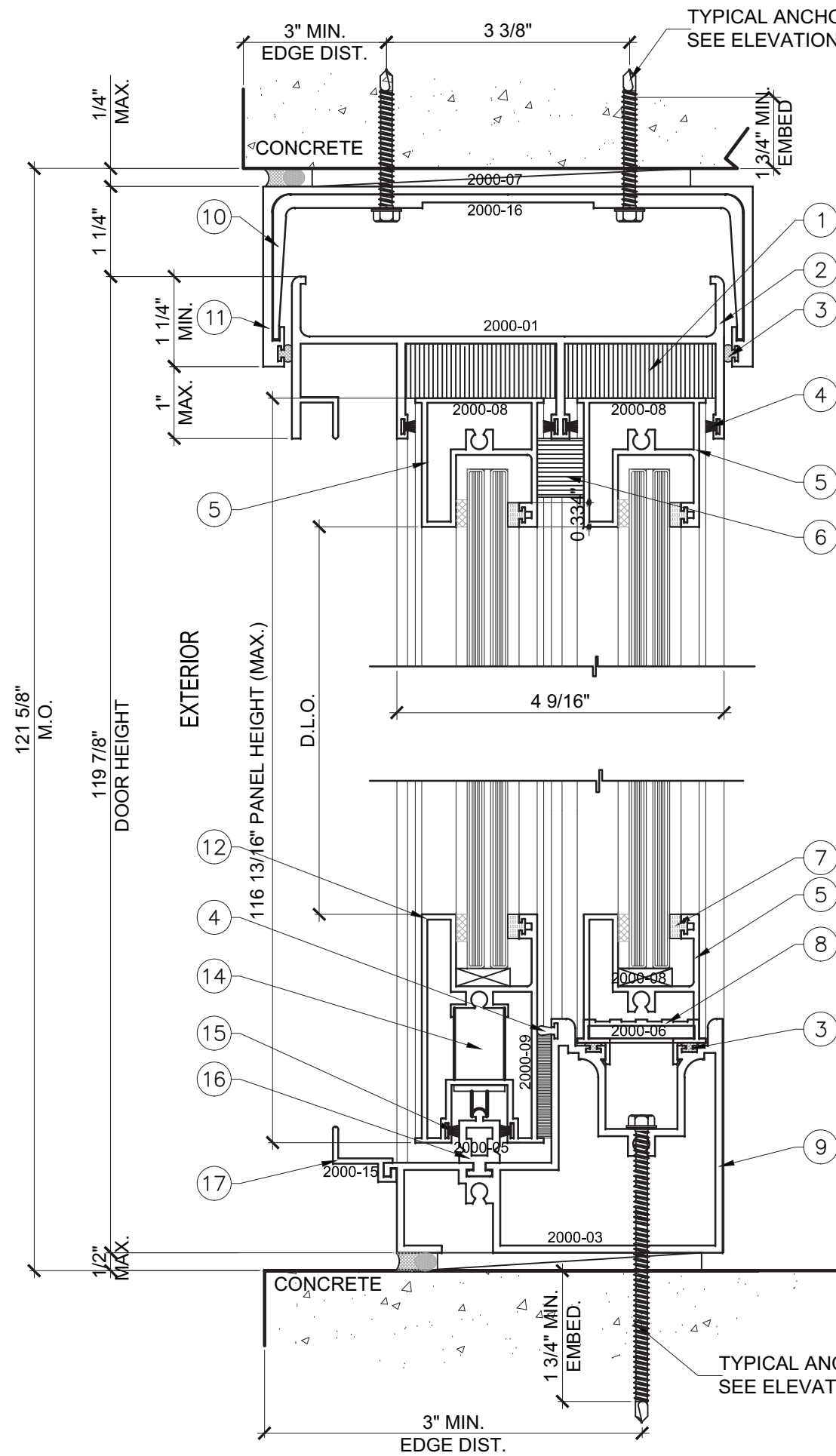


NO.	DESCRIPTION

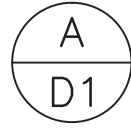
MCY ENGINEERING, INC.
GLAZING CONSULTANTS
8501 SW 124th Ave., Ste. 205A
MIAMI, FL 33183
P: 305.271.0117
F: 305.279.6818
www.MCYEngineering.com
MCY.Engineering@Att.net

SERIES 2000 SLIDING GLASS DOOR - LMI & SMI
CONTINENTAL GLASS SYSTEMS, INC.
325 WEST 74 PLACE HIALEAH, FL 33014
TEL (305) 231-1101 FAX (305) 231-1103

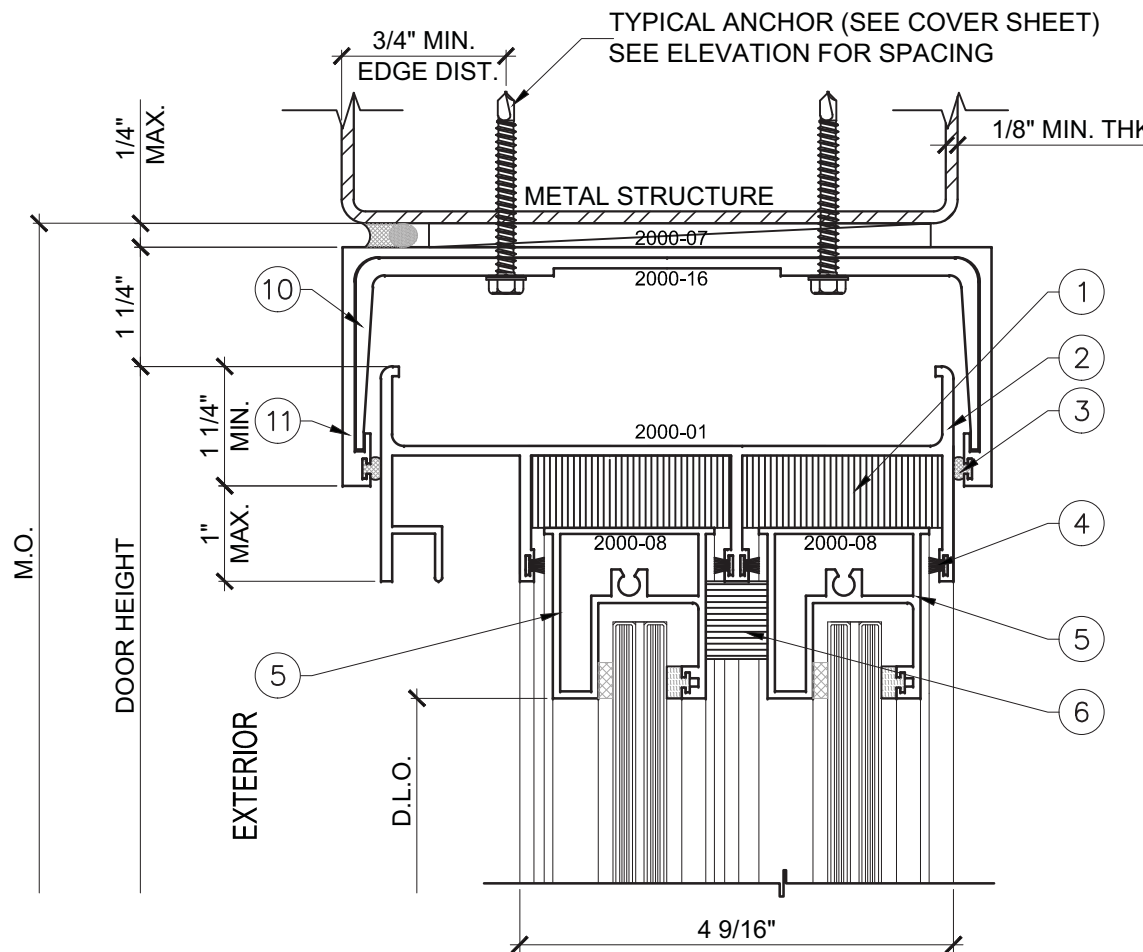
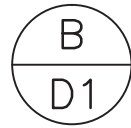
A1	
DATE	09/02/15
SCALE	AS SHOWN
DRAWN	T.G.
PROJECT	15-078
DRAWING NO. AD15-68	
8 OF 17	



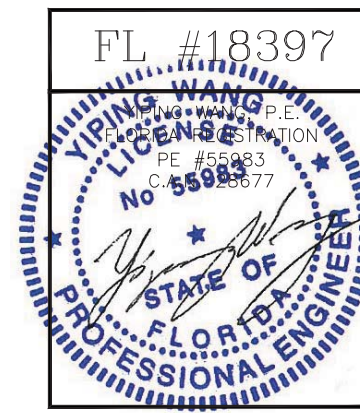
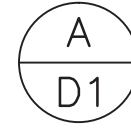
DETAIL



DETAIL



DETAIL

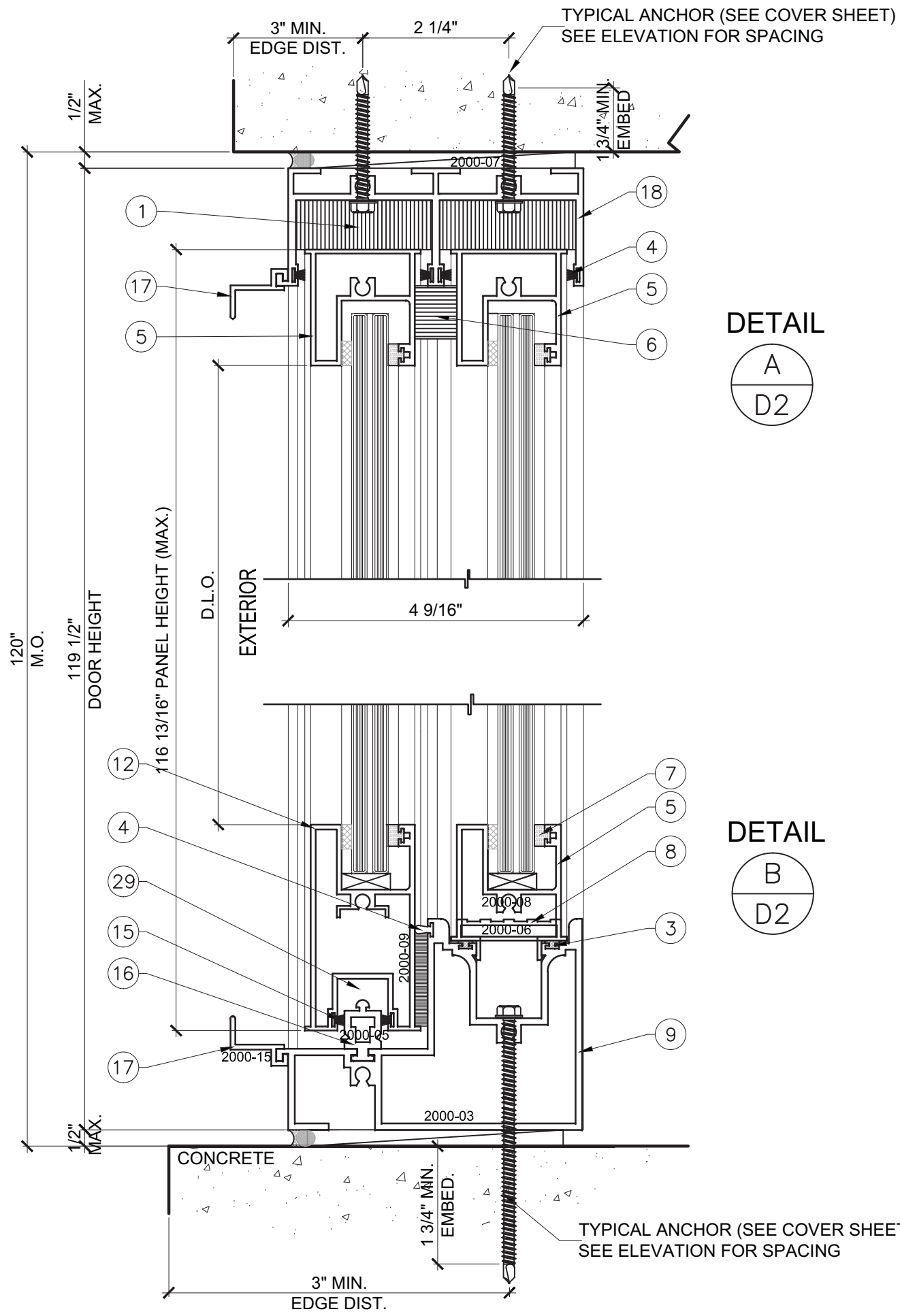


NO.	DATE	DESCRIPTION

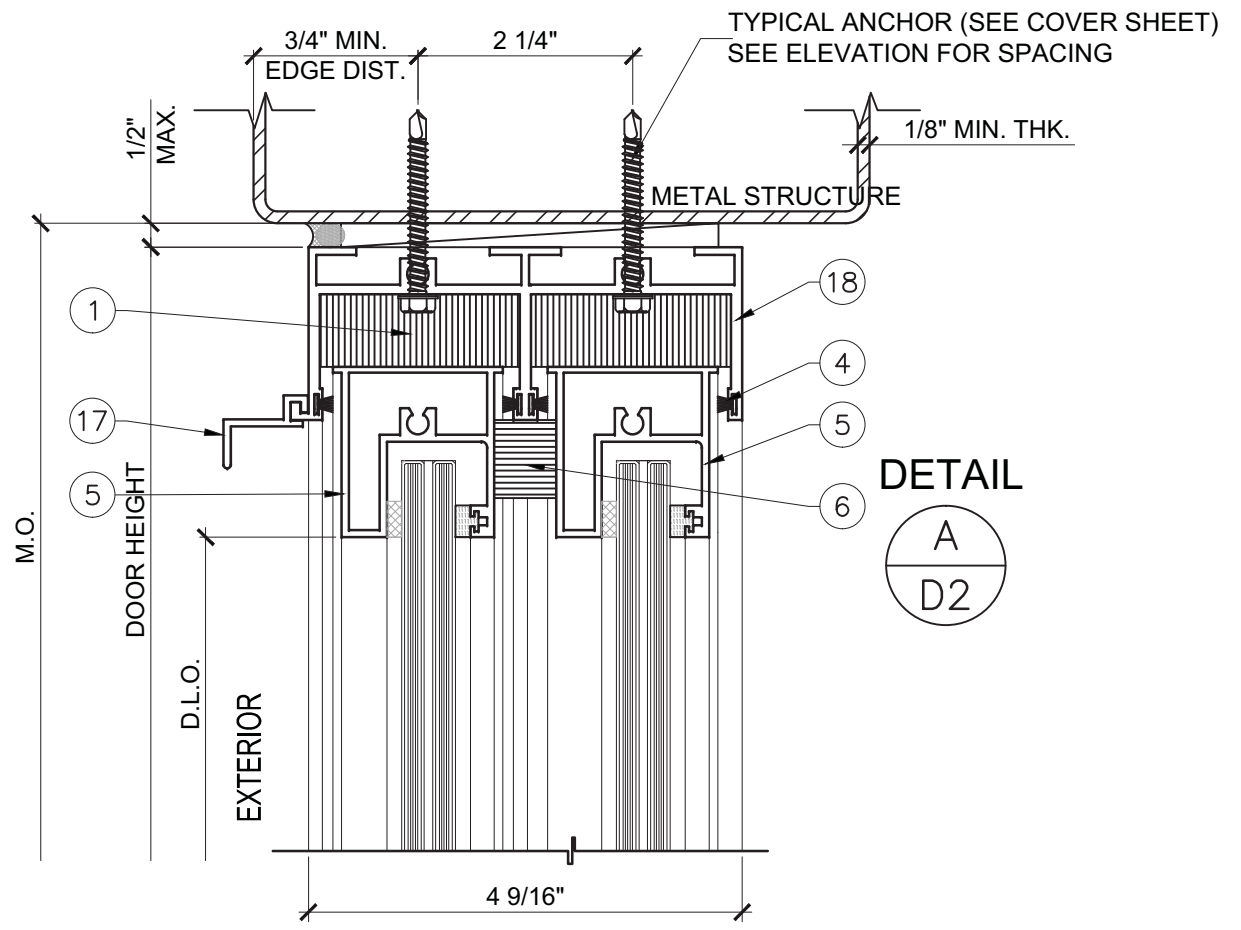
MCY ENGINEERING, INC.
 GLAZING CONSULTANTS
 8501 SW 124 Ave, Ste. 205A
 MIAMI, FL 33183
 P: 305.271.0117
 F: 305.279.6818
 www.MCYEngineering.com
 MCY.Engineering@Att.net

SERIES 2000 SLIDING GLASS DOOR - LMI & SMI
CONTINENTAL GLASS SYSTEMS, INC.
 325 WEST 74 PLACE HIALEAH, FL 33014
 TEL (305) 231-1101 FAX (305) 231-1103

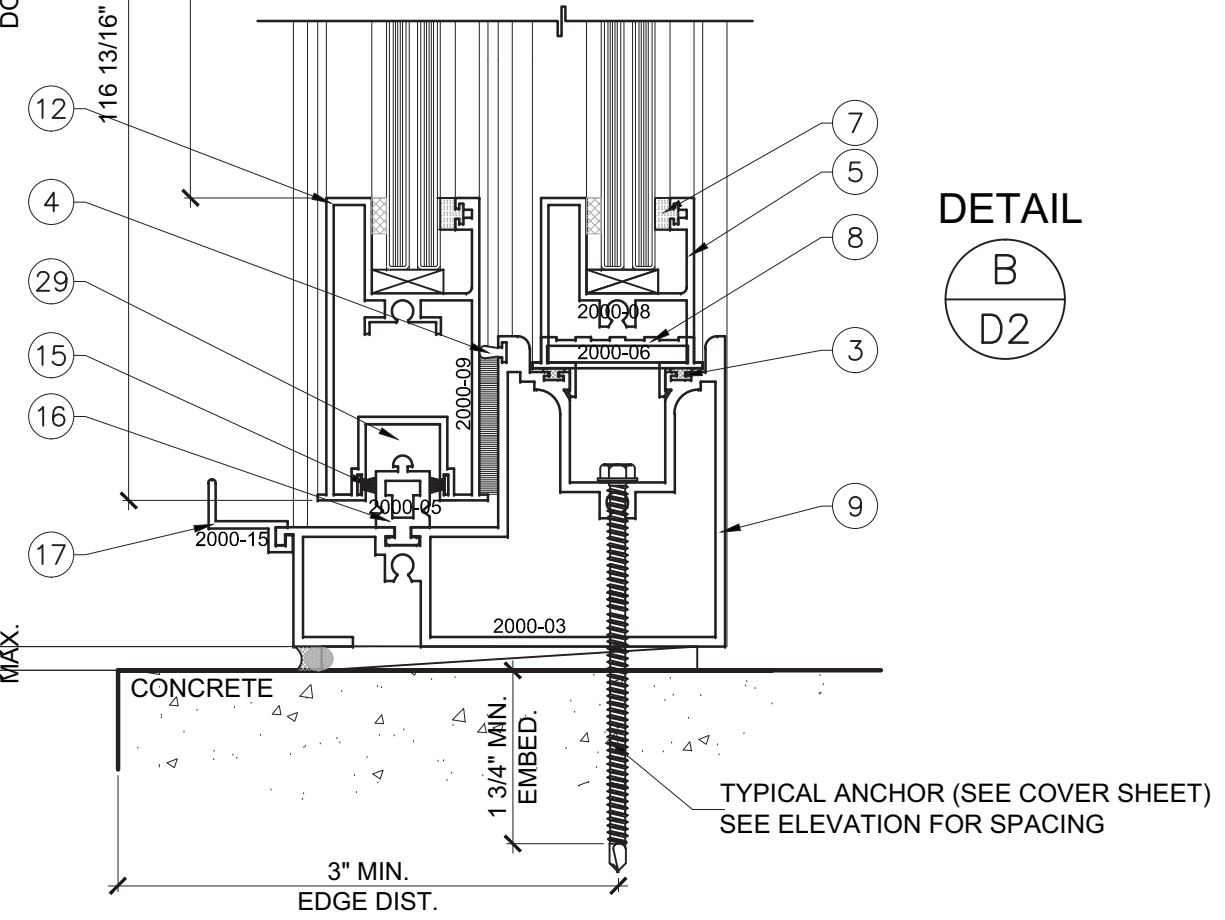
D1
DATE 09/02/15
SCALE AS SHOWN
DRAWN T.G.
PROJECT 15-078
DRAWING NO. AD15-68
9 OF 17



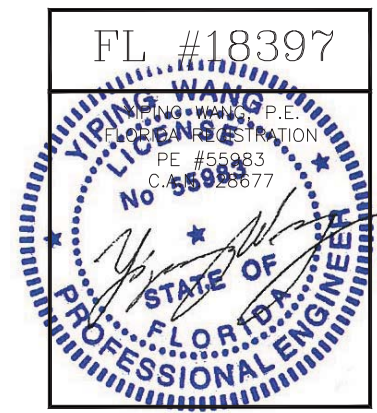
DETAIL
A
D2



DETAIL
A
D2



DETAIL
B
D2



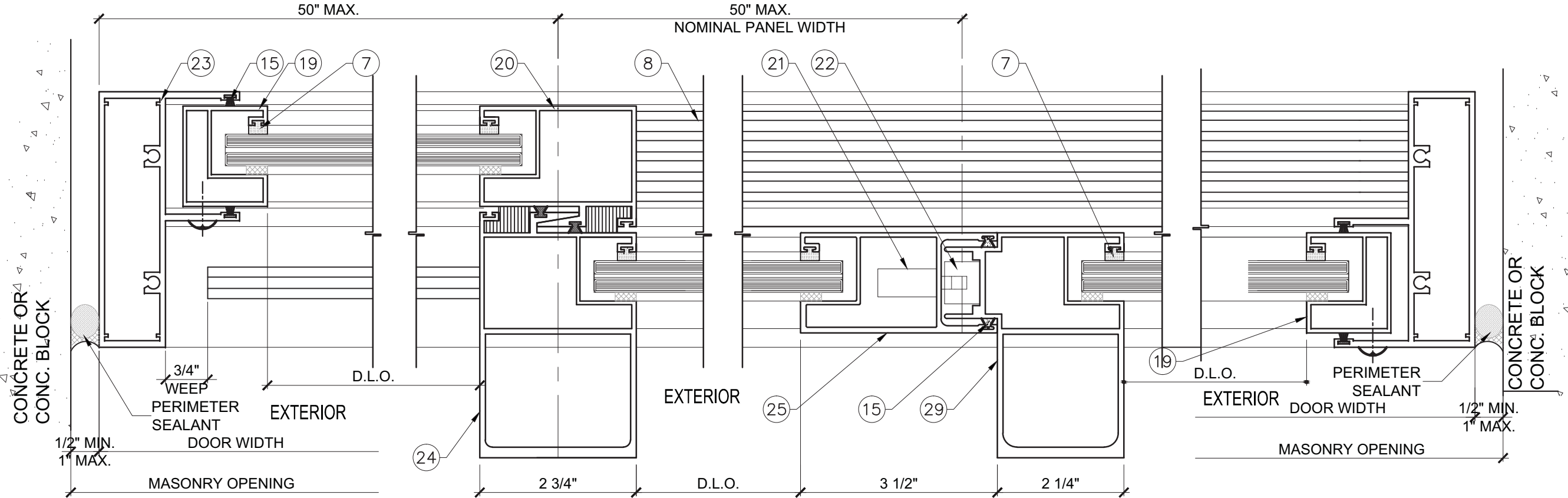
NO.	DATE	DESCRIPTION

MCY ENGINEERING, INC.
GLAZING CONSULTANTS
8501 SW 124 Ave. Ste. 205A
MIAMI, FL 33183
P: 305.271.0117
F: 305.279.6818
www.MCYEngineering.com MCY.Engineering@Att.net

SERIES 2000 SLIDING GLASS DOOR - LMI & SMI
CONTINENTAL GLASS SYSTEMS, INC.
325 WEST 74 PLACE HIALEAH, FL 33014
TEL (305) 231-1101 FAX (305) 231-1103

D2
DATE 09/02/15
SCALE AS SHOWN
DRAWN T.G.
PROJECT 15-078

DRAWING NO. AD15-68
10 OF 17

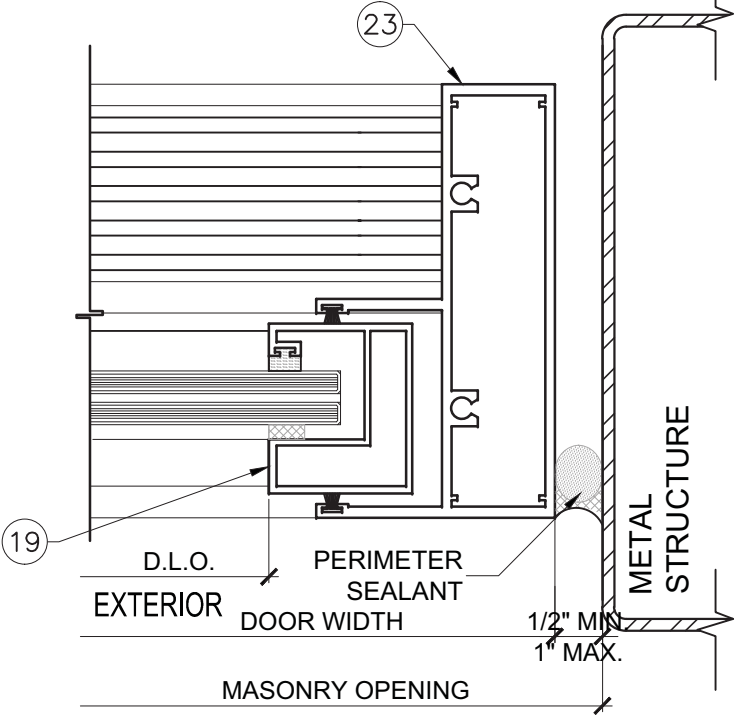


DETAIL $\frac{C}{D3}$

DETAIL $\frac{D}{D3}$

DETAIL $\frac{E}{D3}$

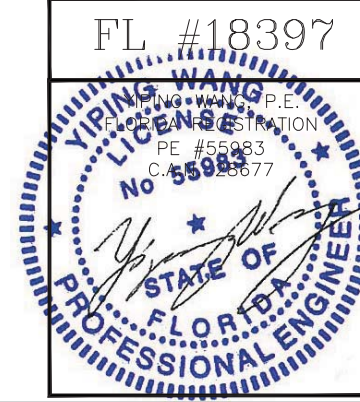
DETAIL $\frac{F}{D3}$



DETAIL $\frac{G}{D3}$

UN REINFORCED 'HD' SGD
 SEE ELEVATIONS & DESIGN LOADS
 ON SHEET E1

- NOTES:
 1. BACKER ROD DIAMETER
 EQUALS SEAL WIDTH X 120%
 2. SEALANT DEPTH IS :
 1/2" MIN. FOR WIDTHS UP TO 1".



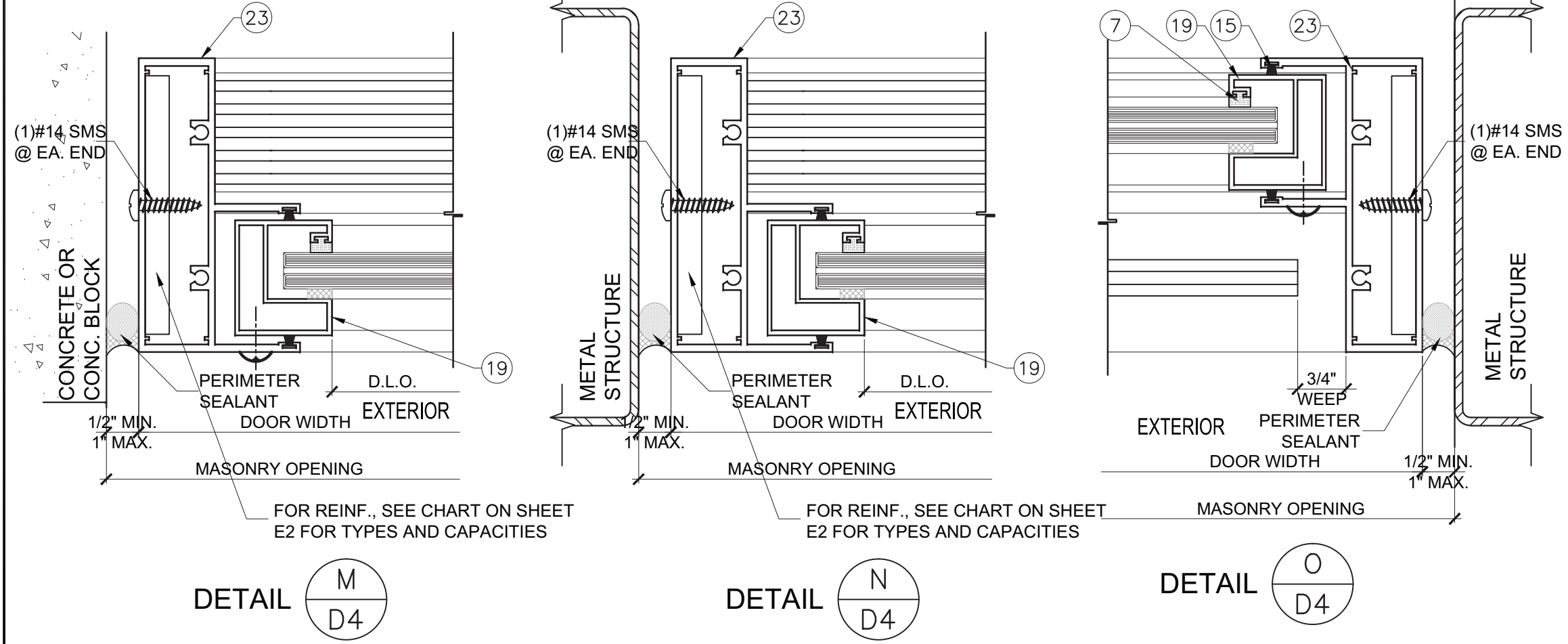
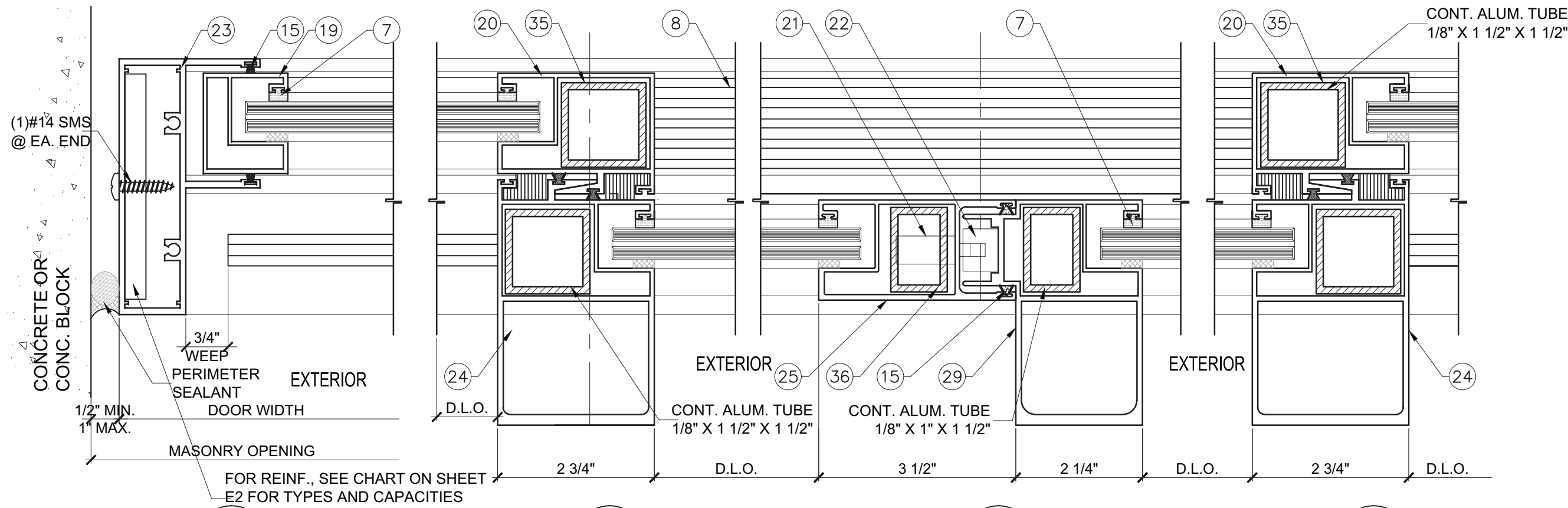
NO	DATE	REVISIONS DESCRIPTION

MCY ENGINEERING, INC.
 GLAZING CONSULTANTS
 8501 SW 124 Ave, Ste. 205A
 MIAMI, FL 33183
 P: 305.271.0117
 F: 305.279.6818
 www.MCYEngineering.com
 MCY.Engineering@Att.net

SERIES 2000 SLIDING GLASS DOOR - LMI & SMI
CONTINENTAL GLASS SYSTEMS, INC.
 325 WEST 74 PLACE HIALEAH, FL 33014
 TEL (305) 231-1101 FAX (305) 231-1103

D3	
DATE	09/02/15
SCALE	AS SHOWN
DRAWN	T.G.
PROJECT	15-078

DRAWING NO.
 AD15-68
 11 OF 17



REINFORCED 'HD' SGD
SEE ELEVATIONS & DESIGN LOADS ON SHEET E2 & E3

- NOTES:
 1. BACKER ROD DIAMETER EQUALS SEAL WIDTH X 120%
 2. SEALANT DEPTH IS : 1/2" MIN. FOR WIDTHS UP TO 1"

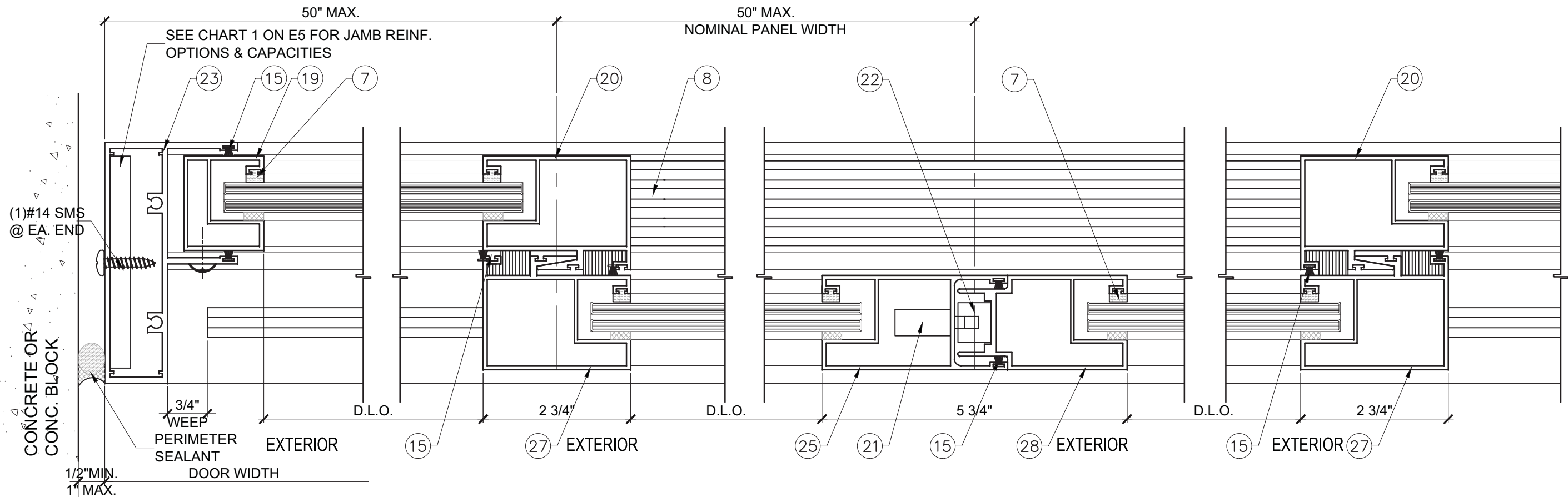


NO	DATE	DESCRIPTION

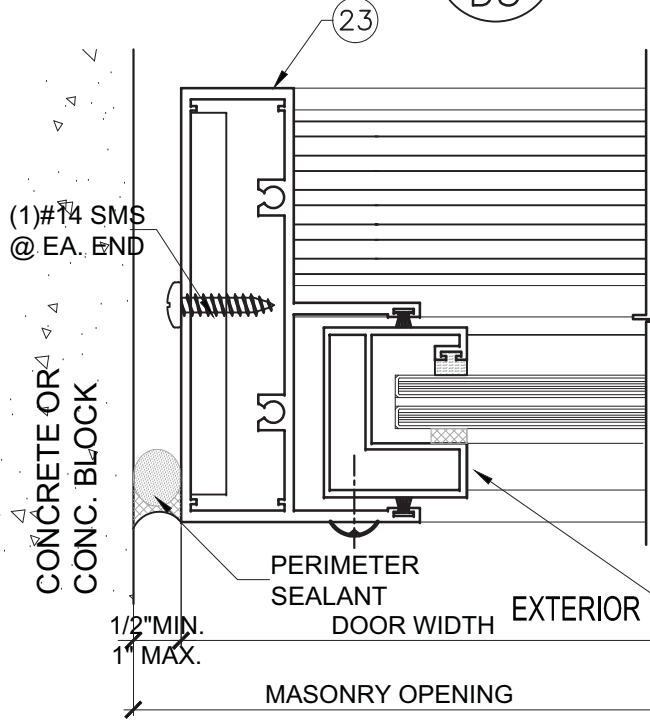
MCY ENGINEERING, INC.
 GLAZING CONSULTANTS
 8501 SW 124 Ave, Ste. 205A
 MIAMI, FL 33183
 P: 305.271.0117
 F: 305.279.6818
 www.MCYEngineering.com
 MCY.Engineering@Att.net

SERIES 2000 SLIDING GLASS DOOR - LMI & SMI
CONTINENTAL GLASS SYSTEMS, INC.
 325 WEST 74 PLACE HIALEAH, FL 33014
 TEL (305) 231-1101 FAX (305) 231-1103

DATE	09/02/15
SCALE	AS SHOWN
DRAWN	T.G.
PROJECT	15-078
DRAWING NO.	AD15-68
12 OF 17	

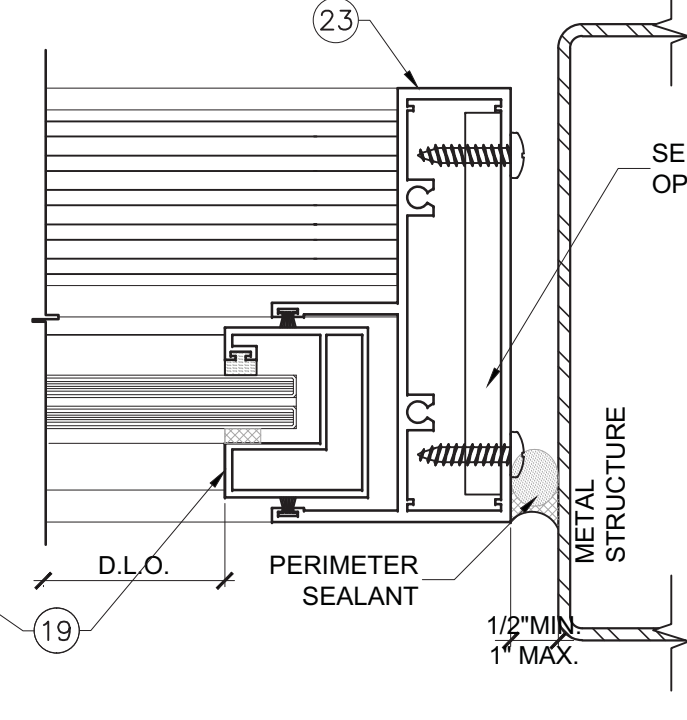


DETAIL **C**
D5



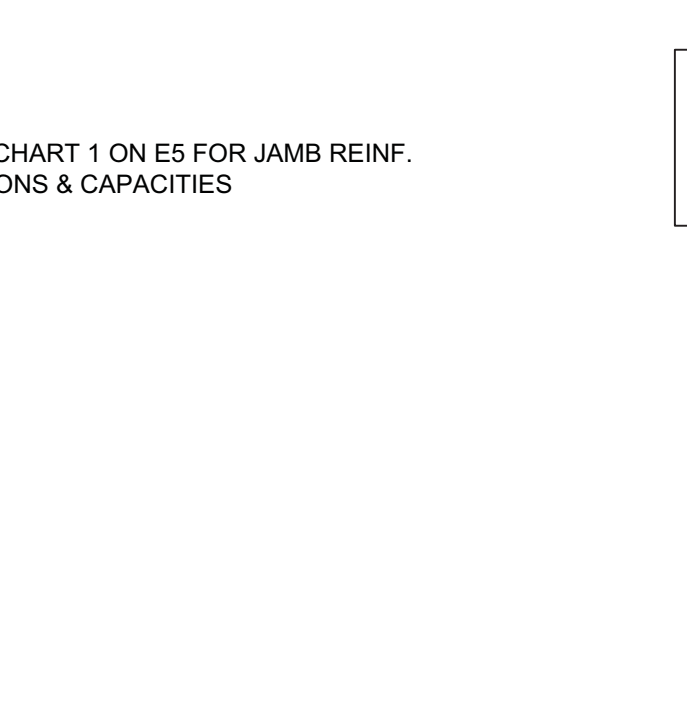
DETAIL **G**
D5

DETAIL **D**
D5

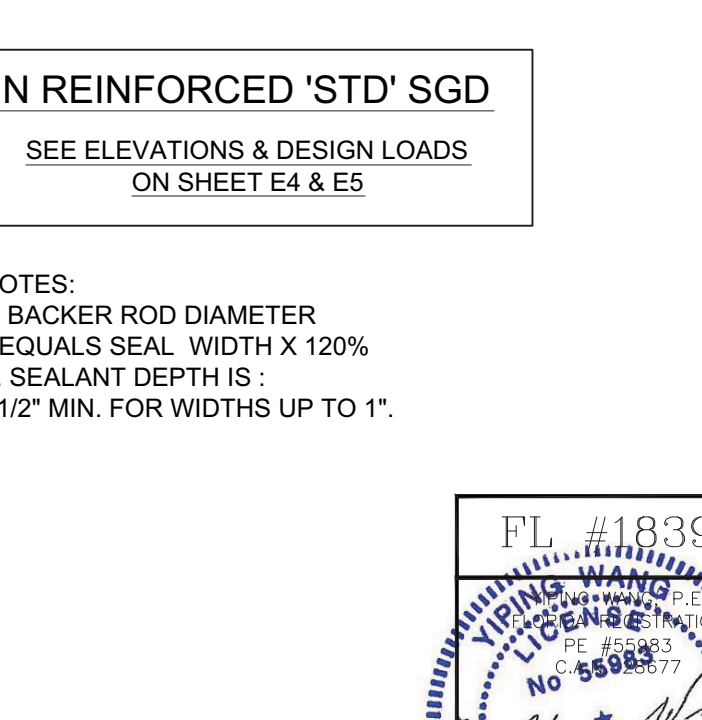


DETAIL **H**
D5

DETAIL **E**
D5

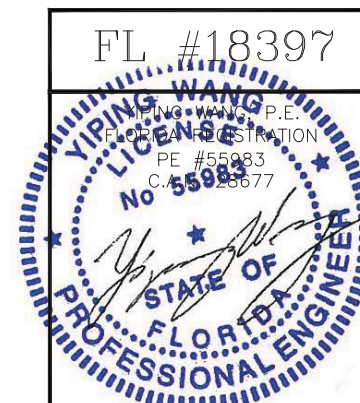


DETAIL **F**
D5



UN REINFORCED 'STD' SGD
SEE ELEVATIONS & DESIGN LOADS
ON SHEET E4 & E5

- NOTES:
1. BACKER ROD DIAMETER
EQUALS SEAL WIDTH X 120%
2. SEALANT DEPTH IS :
1/2" MIN. FOR WIDTHS UP TO 1".

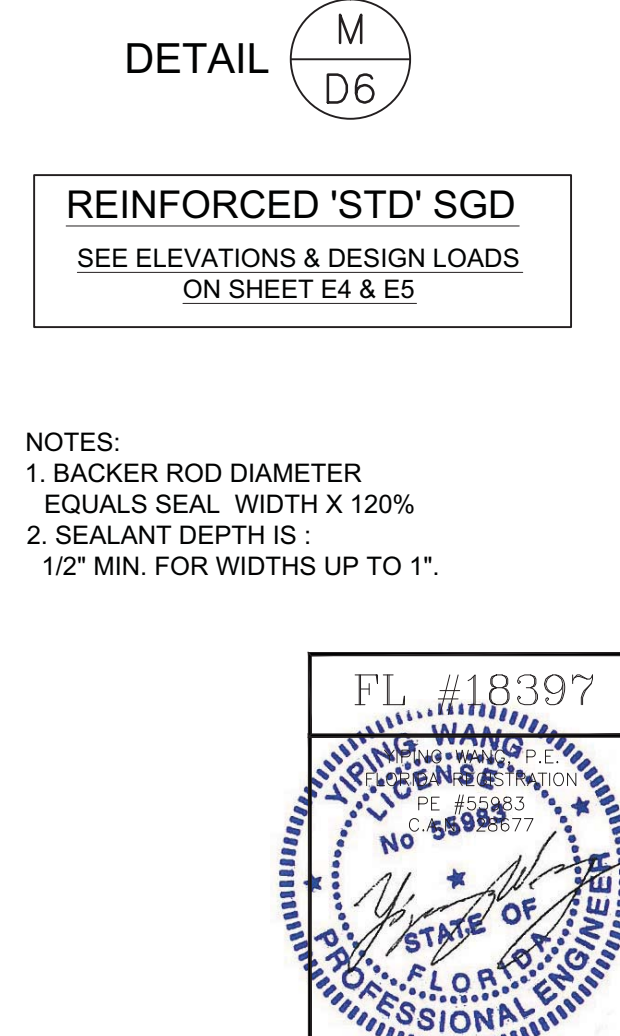
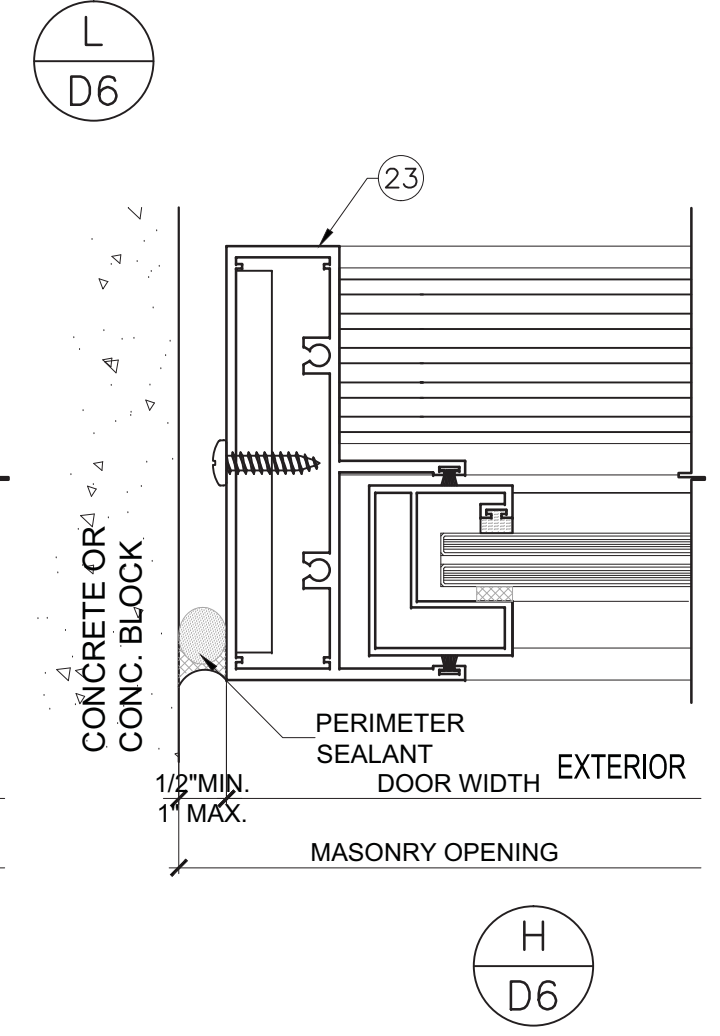
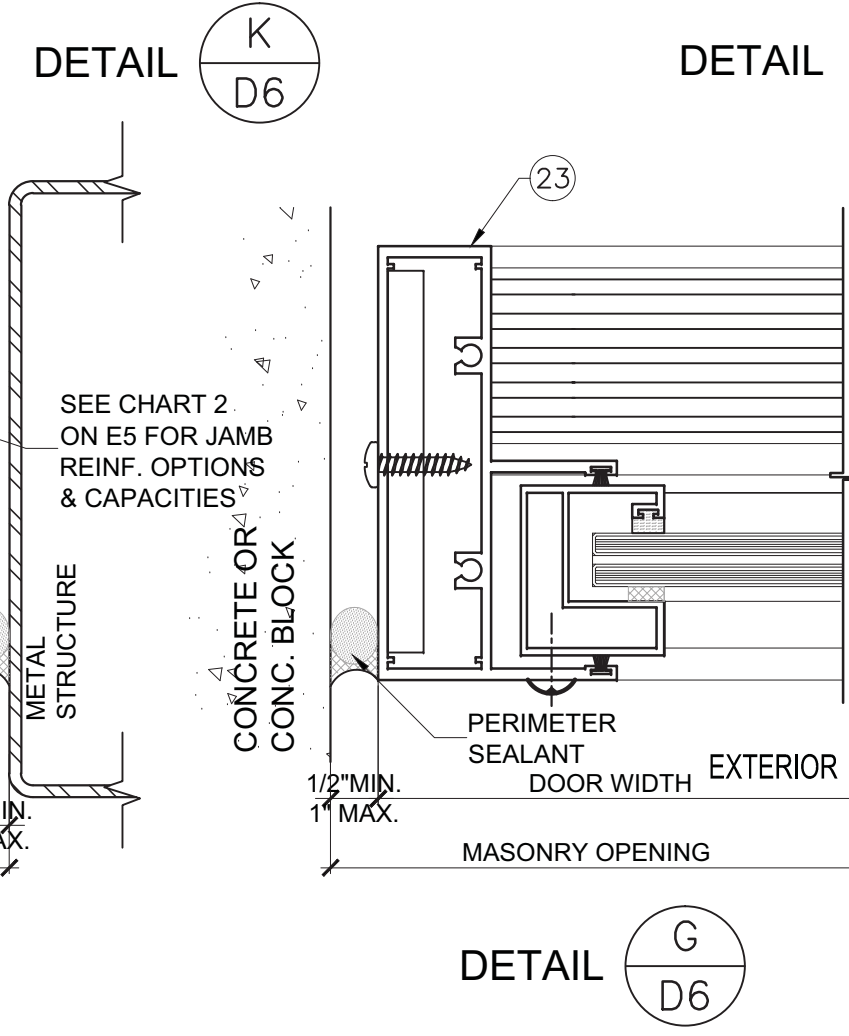
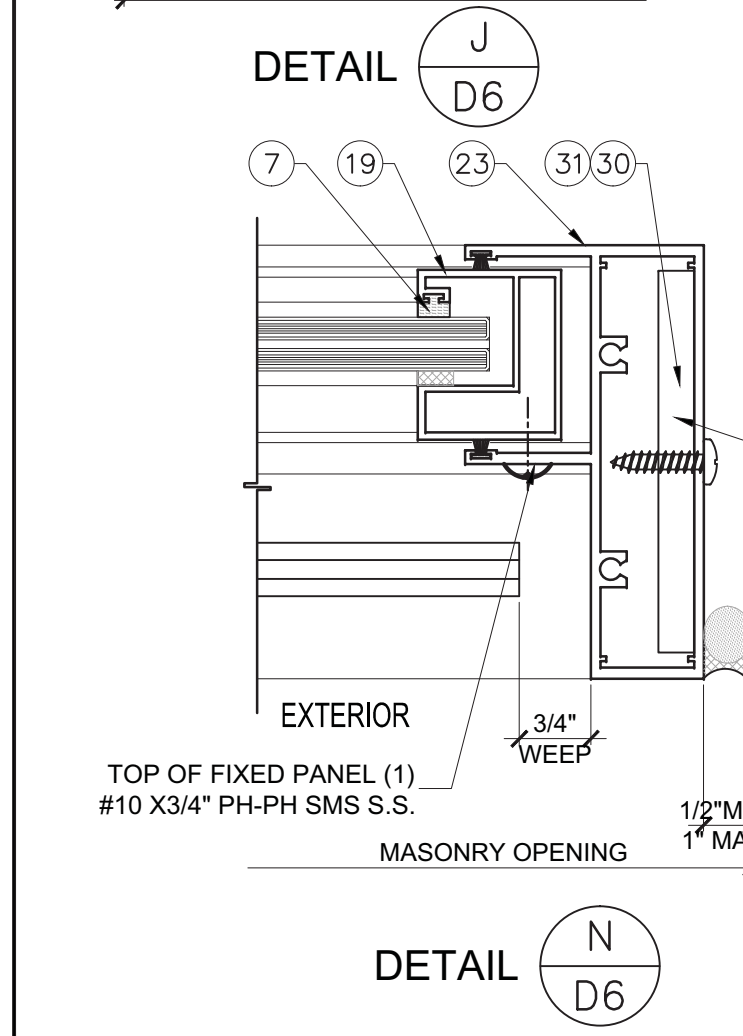
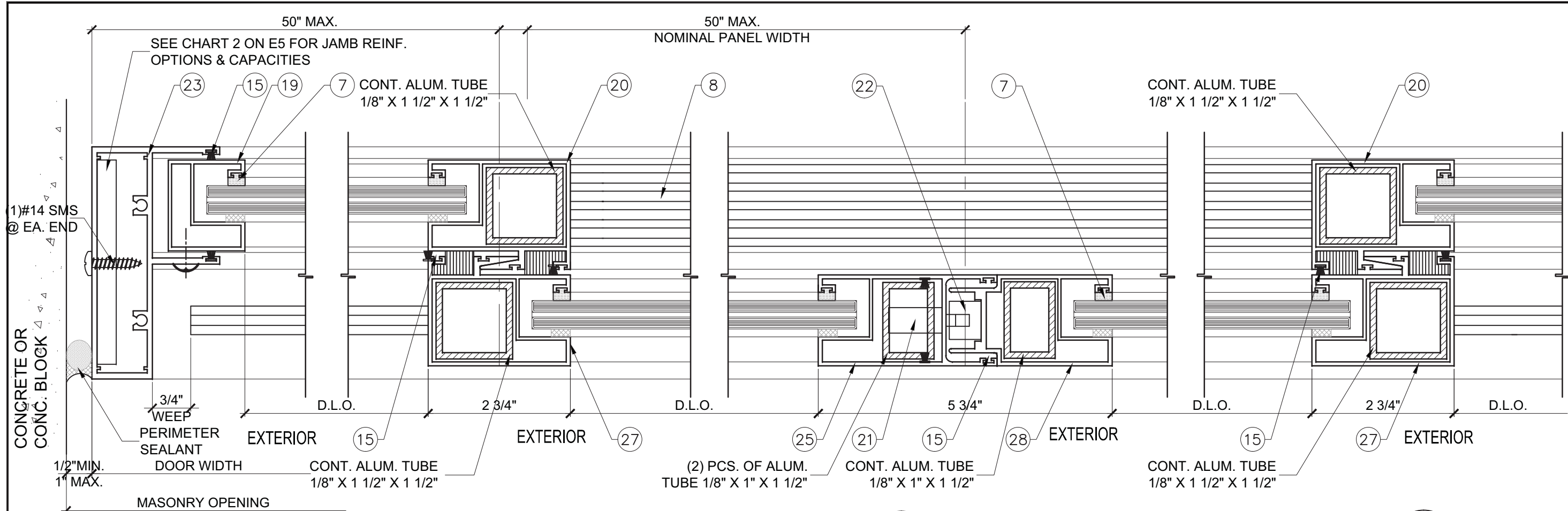


NO	DATE	REVISIONS	DESCRIPTION

MCY ENGINEERING, INC.
GLAZING CONSULTANTS
8501 SW 124 Ave, Ste. 205A
MIAMI, FL 33183
P: 305.271.0117
F: 305.279.6818
www.MCYEngineering.com
MCY.Engineering@Att.net

SERIES 2000 SLIDING GLASS DOOR - LMI & SMI
CONTINENTAL GLASS SYSTEMS, INC.
325 WEST 74 PLACE HIALEAH, FL 33014
TEL (305) 231-1101 FAX (305) 231-1103

D5	
DATE	09/02/15
SCALE	AS SHOWN
DRAWN	T.G.
PROJECT	15-078
DRAWING NO.	AD15-68
13 OF 17	



REINFORCED 'STD' SGD
 SEE ELEVATIONS & DESIGN LOADS
 ON SHEET E4 & E5

- NOTES:
 1. BACKER ROD DIAMETER
 EQUALS SEAL WIDTH X 120%
 2. SEALANT DEPTH IS :
 1/2" MIN. FOR WIDTHS UP TO 1".

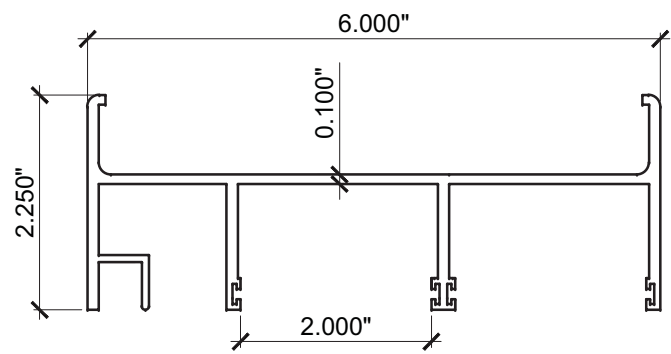


NO	DATE	DESCRIPTION

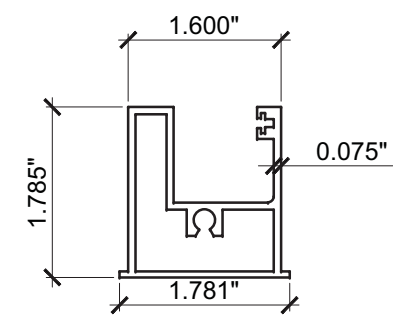
MCY ENGINEERING, INC.
 GLAZING CONSULTANTS
 8501 SW 124 Ave. Ste. 205A
 MIAMI, FL 33183
 P: 305.271.0117
 F: 305.279.6818
 www.MCYEngineering.com
 MCY.Engineering@Att.net

SERIES 2000 SLIDING GLASS DOOR - LMI & SMI
CONTINENTAL GLASS SYSTEMS, INC.
 325 WEST 74 PLACE HIALEAH, FL 33014
 TEL (305) 231-1101 FAX (305) 231-1103

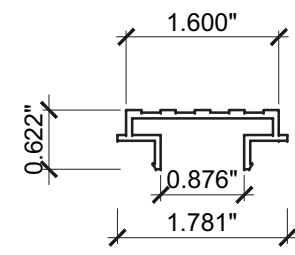
D6	
DATE	09/02/15
SCALE	AS SHOWN
DRAWN	T.G.
PROJECT	15-078
DRAWING NO.	AD15-68
14 OF 17	



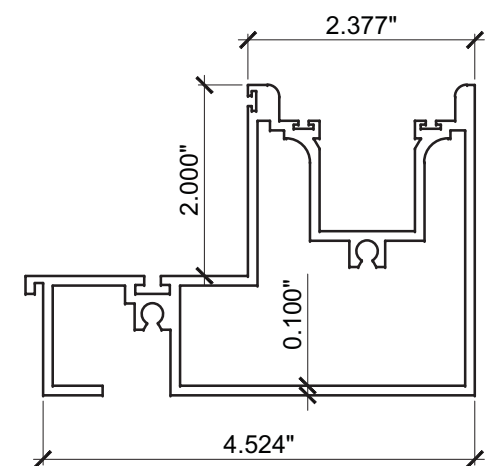
2 FRAME HEAD RECEPTOR
2000-01 6005-T5



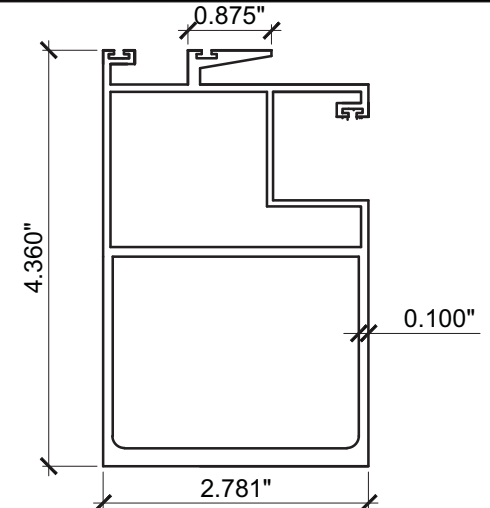
5 TOP AND BOTTOM
PANEL STILE
2000-08 6005-T5



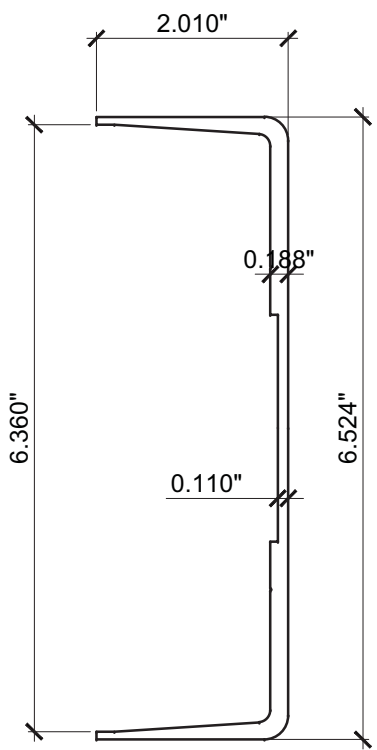
8 THRESHOLD
2000-06 6005-T5



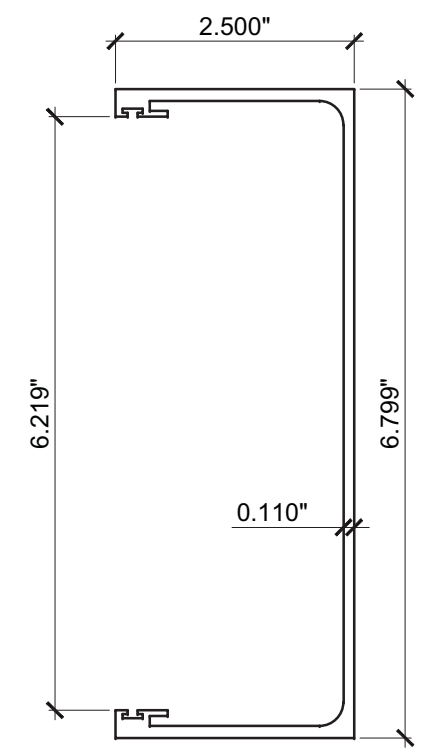
9 SILL
2000-03 6005-T5



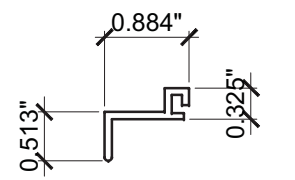
24 HEAVY INTERLOCK
2000-12 6005-T5



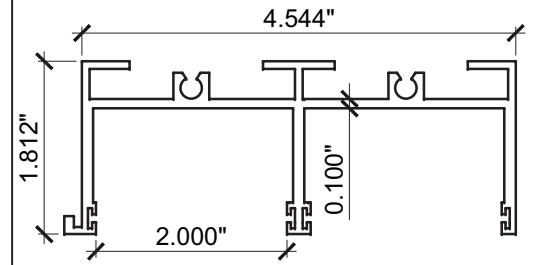
10 REINFORCING
2000-16 6005-T5



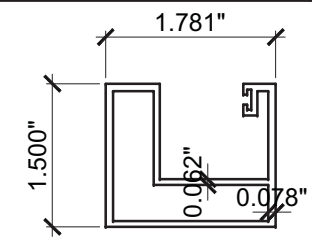
11 HEAD RECEPTOR
2000-07 6005-T5



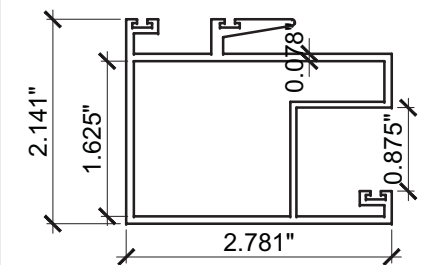
17 SCREEN TRACK
2000-15 6005-T5



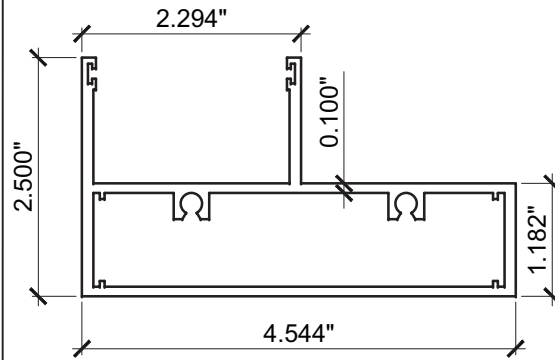
18 STANDARD HEAD
2000-02 6005-T5



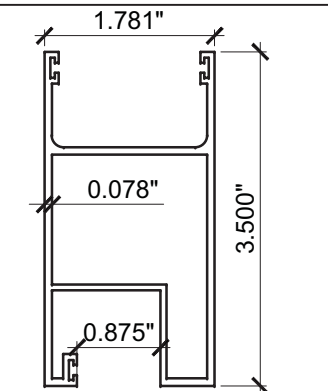
19 FIXED STILE
2000-13 6005-T5



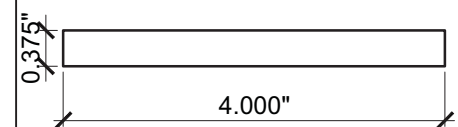
20 INSIDE INTERLOCK
2000-11 6005-T5



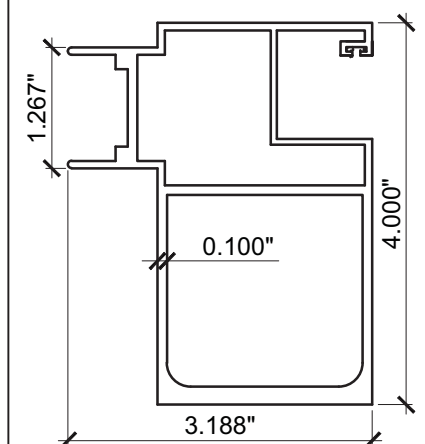
23 JAMB
2000-04 6005-T5



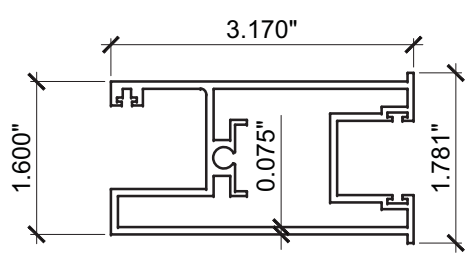
25 LOCK STILE
2000-10 6005-T5



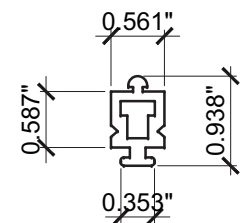
30 ALUM. BAR
6063-T6



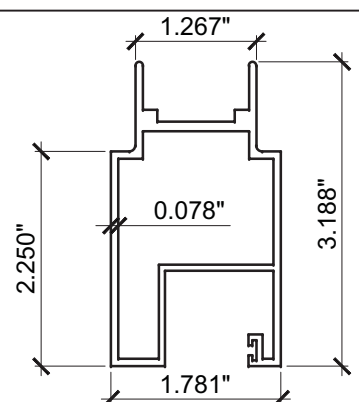
29 HEAVY ASTRAGAL
2000-14 6005-T5



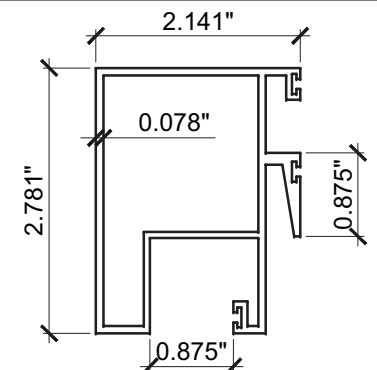
12 BOTTOM MOVING
PANEL STILE
2000-09 6005-T5



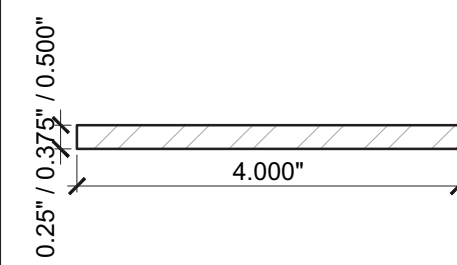
16 SILL TRACK
2000-05 6005-T5



28 ASTRAGAL
2000-18 6005-T5



27 OUTSIDE INTERLOCK
2000-17 6005-T5



31 32 33 STEEL BAR
A36 MIN.

NO	DATE	DESCRIPTION

MCY
MCY ENGINEERING, INC.
 GLAZING CONSULTANTS
 8501 SW 124 Ave, Ste. 205A
 MIAMI, FL 33183
 P: 305.271.0117
 F: 305.279.6818
 www.MCYEngineering.com
 MCY.Engineering@Att.net

SERIES 2000 SLIDING GLASS DOOR - LMI & SMI
CONTINENTAL GLASS SYSTEMS, INC.
 325 WEST 74 PLACE HIALEAH, FL 33014
 TEL (305) 231-1101 FAX (305) 231-1103

FL #18397
YIPING WANG
 P.E.
 LICENSED PROFESSIONAL ENGINEER
 No. 55983
 C. #55983
 20677
 STATE OF FLORIDA
 PROFESSIONAL ENGINEER

PARTS	
DATE	09/02/15
SCALE	AS SHOWN
DRAWN	T.G.
PROJECT	15-078
DRAWING NO.	AD15-68
15 OF 17	

BILL OF MATERIALS

ITEM #	PROFILE	DESCRIPTION	MATERIAL	MANUFACTURER/REMARKS
1	P 10009 AFK	HEAD PAD	-	ULTRAFAB
2	2000 - 01	FRAME HEAD RECEPTOR	ALUM. 6005-T5	FRAME
3	FP-448-V	VINYL BULB	-	PROTOTYPE PLASTIC EXTRUSION
4	-	FIN-SEAL .370 x .187	-	ULTRAFAB
5	2000-08	TOP & BOTTOM PANEL STILE	ALUM. 6005-T5	PANEL
6	P 7509 AFK	INTERLOCK PAD	-	ULTRAFAB
7	CGS-01	GLASS SPACING	-	PROTOTYPE PLASTIC EXTRUSION
8	2000-06	THRESHOLD	ALUM. 6005-T5	-
9	2000-03	SILL	ALUM. 6005-T5	FRAME
10	2000-16	REINFORCING	ALUM. 6063-T6	-
11	2000-07	HEAD RECEPTOR	ALUM. 6005-T5	-
12	2000-09	BOTTOM MOVING PANEL STILE	ALUM. 6005-T5	PANEL
14	AR-50A	WHEEL	-	DOOR & WINDOW HARDWARE
15	-	FIN-SEAL .250 x .187	-	ULTRAFAB
16	2000-05	SILL TRACK	ALUM. 6005-T5	FRAME
17	2000-15	SCREEN TRACK	ALUM. 6005-T5	-
18	2000-02	STANDARD HEAD	ALUM. 6005-T5	FRAME
19	2000-13	FIXED STILE	ALUM. 6005-T5	PANEL
20	2000-11	INSIDE INTERLOCK	ALUM. 6005-T5	PANEL
21	D-60 C	LOCK	-	DOOR & WINDOW HARDWARE
22	KP-50	KEEPER	-	DOOR & WINDOW HARDWARE
23	2000-04	JAMB	ALUM. 6005-T5	FRAME
24	2000-12	HEAVY INTERLOCK	ALUM. 6005-T5	PANEL
25	2000-10	LOCK STILE	ALUM. 6005-T5	PANEL
27	2000-17	OUTSIDE INTERLOCK	ALUM. 6005-T5	PANEL
28	2000-18	ASTRAGAL	ALUM. 6005-T5	PANEL
29	2000-14	HEAVY ASTRAGAL	ALUM. 6005-T5	-
30	-	3/8" X 4" ALUMINUM REINFORCING BAR	ALUM. 6063-T6	FULL LENGTH
31	-	1/4" X 4" STEEL REINFORCING BAR	A36 MIN. STEEL	FULL LENGTH
32	-	3/8" X 4" STEEL REINFORCING BAR	A36 MIN. STEEL	FULL LENGTH
33	-	1/2" X 4" STEEL REINFORCING BAR	A36 MIN. STEEL	FULL LENGTH
34	-	SETTING BLOCK, 1/4" X 3/4" X 4" LG .AT 1/4 POINTS	NEOPRENE	DUROMETER 70-90, SHORE A OR E.Q.
35	-	1 1/2" X 1 1/2" X 1/8" ALUM. TUBE	ALUM. 6063-T6	-
36	-	1" X 1 1/2" X 1/8" ALUM. TUBE	ALUM. 6063-T6	-

REVISIONS	DESCRIPTION
NO	DATE

MCY ENGINEERING, INC.
GLAZING CONSULTANTS

8501 SW 124 Ave. Ste. 205A
MIAMI, FL 33183
P: 305.271.0117
F: 305.279.6818
www.MCYEngineering.com MCY.Engineering@Att.net

SERIES 2000 SLIDING GLASS DOOR - LMI & SMI

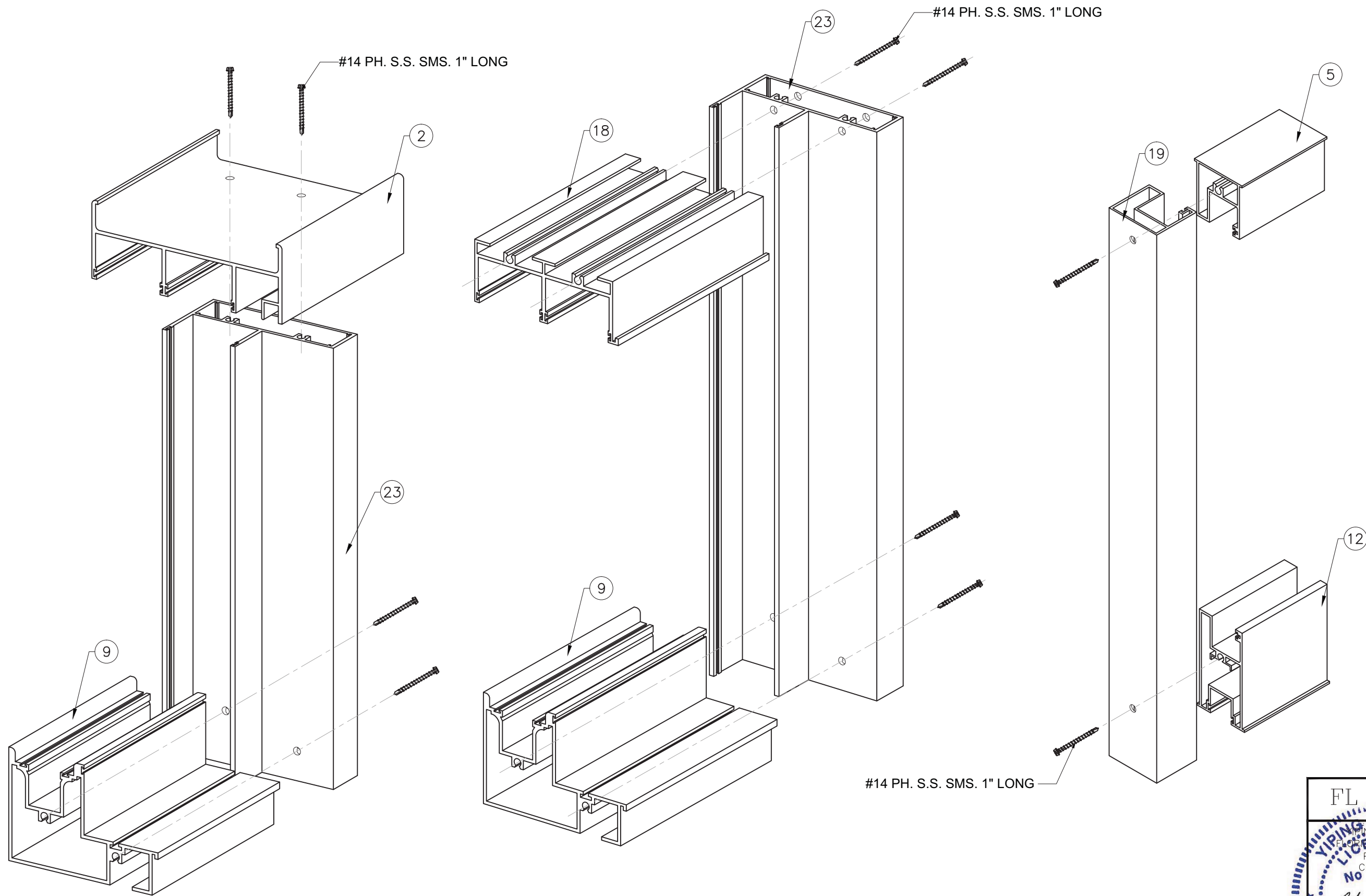
CONTINENTAL GLASS SYSTEMS, INC.
325 WEST 74 PLACE HIALEAH, FL 33014
TEL (305) 231-1101 FAX (305) 231-1103

FL #18397

YIPING WANG P.E.
FLORIDA REGISTRATION
PE #55983
C.# 55983

STATE OF FLORIDA
PROFESSIONAL ENGINEER

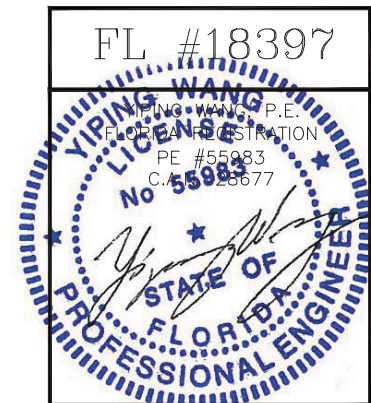
BOM	
DATE	09/02/15
SCALE	AS SHOWN
DRAWN	T.G.
PROJECT	15-078
DRAWING NO. AD15-68	
16 OF 17	



FRAME CORNER ASSEMBLY
TOP AND BOTTOM

FRAME CORNER ASSEMBLY
TOP AND BOTTOM

PANEL ASSEMBLY
TOP AND BOTTOM



NO	DATE	REVISIONS	DESCRIPTION

MCY ENGINEERING, INC.
GLAZING CONSULTANTS
8501 SW 124 Ave, Ste. 205A
MIAMI, FL 33183
P: 305.271.0117
F: 305.279.6818
www.MCYEngineering.com MCY.Engineering@Att.net

SERIES 2000 SLIDING GLASS DOOR - LMI & SMI
CONTINENTAL GLASS SYSTEMS, INC.
325 WEST 74 PLACE HIALEAH, FL 33014
TEL (305) 231-1101 FAX (305) 231-1103

ISO
DATE 09/02/15
SCALE AS SHOWN
DRAWN T.G.
PROJECT 15-078
DRAWING NO. AD15-68
17 OF 17